

DBP REFERENCE BOOKLET

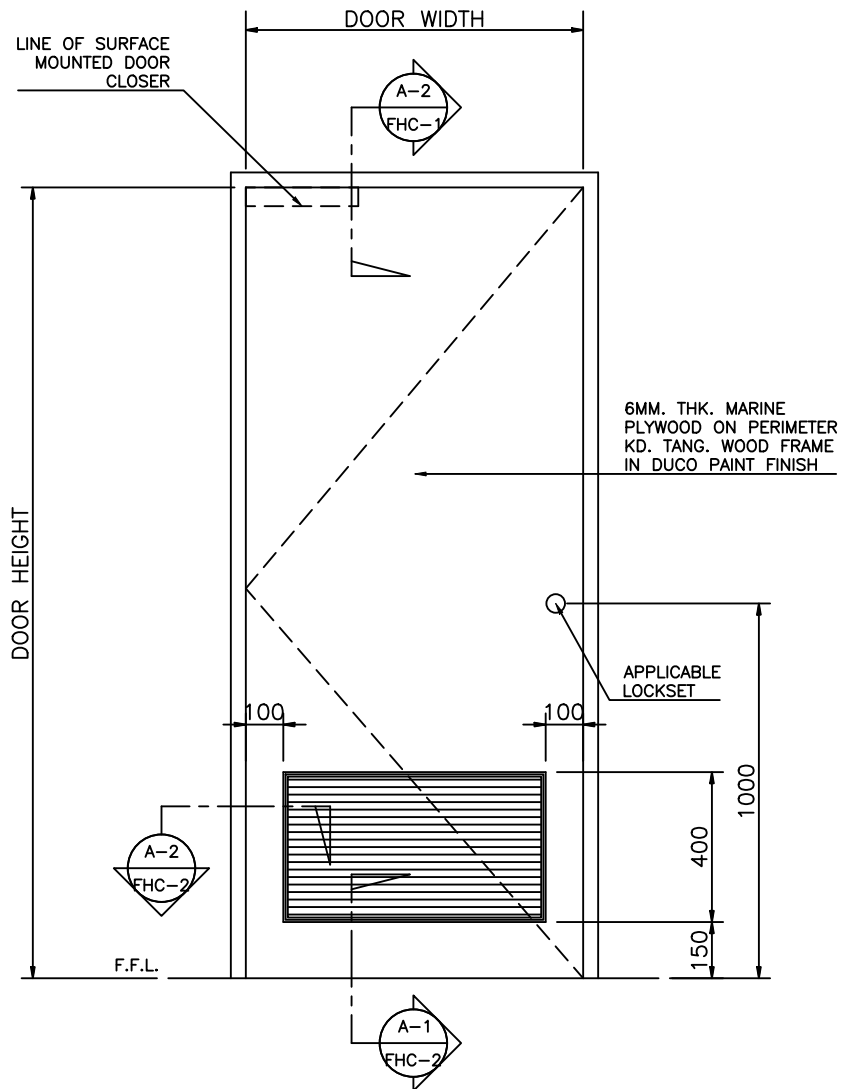
DBP NAVAL BRANCH

JULY 17, 2025

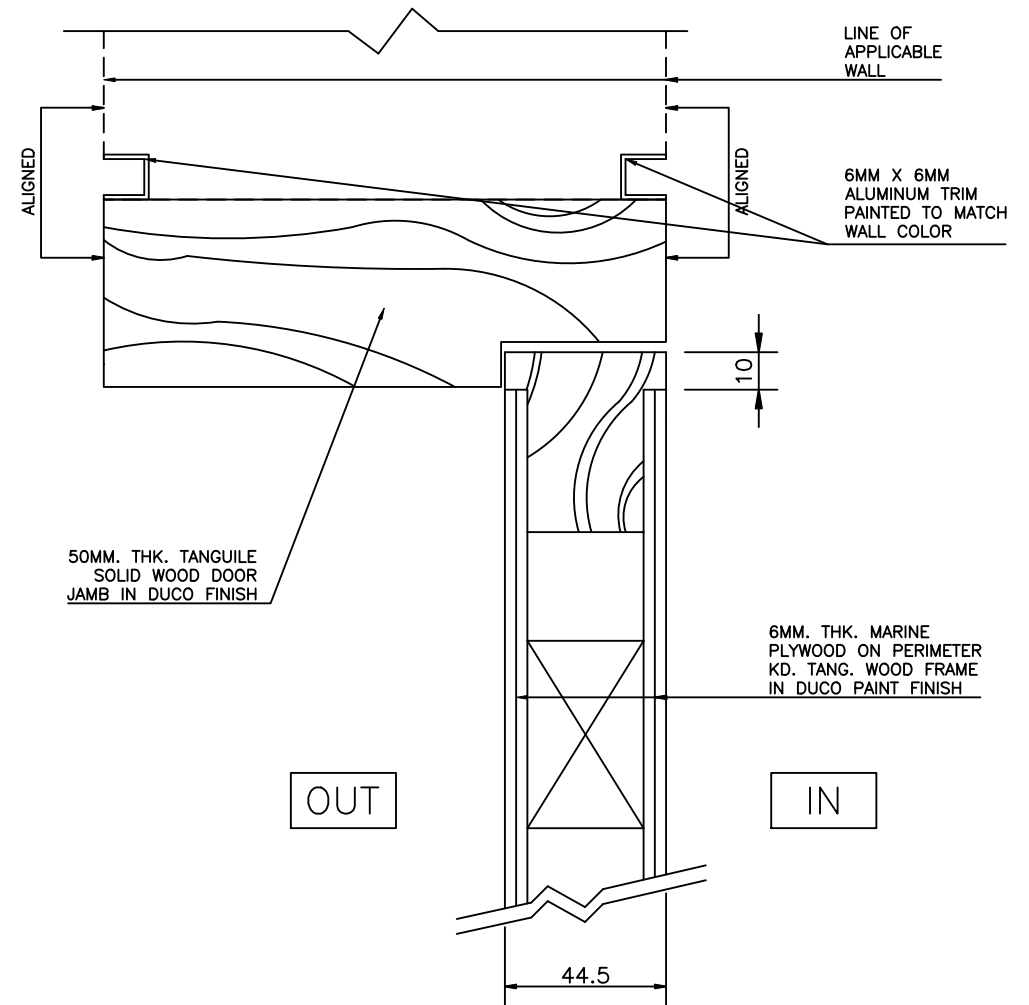


We Build Possibilities.





ELEVATION



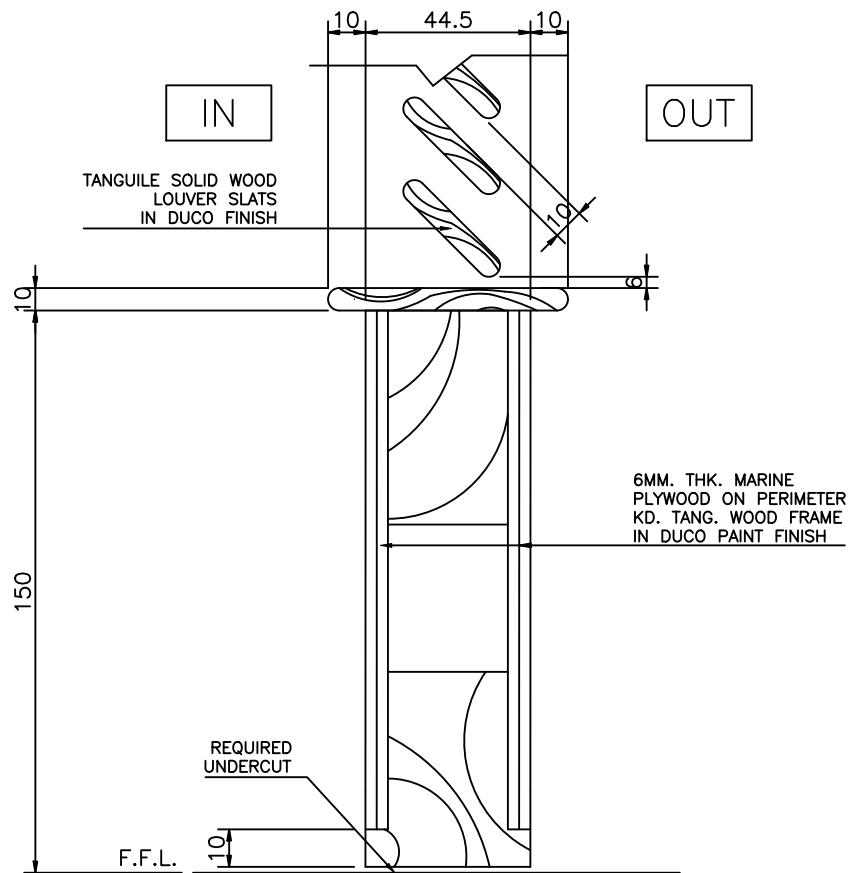
HEAD AND PANEL DETAIL



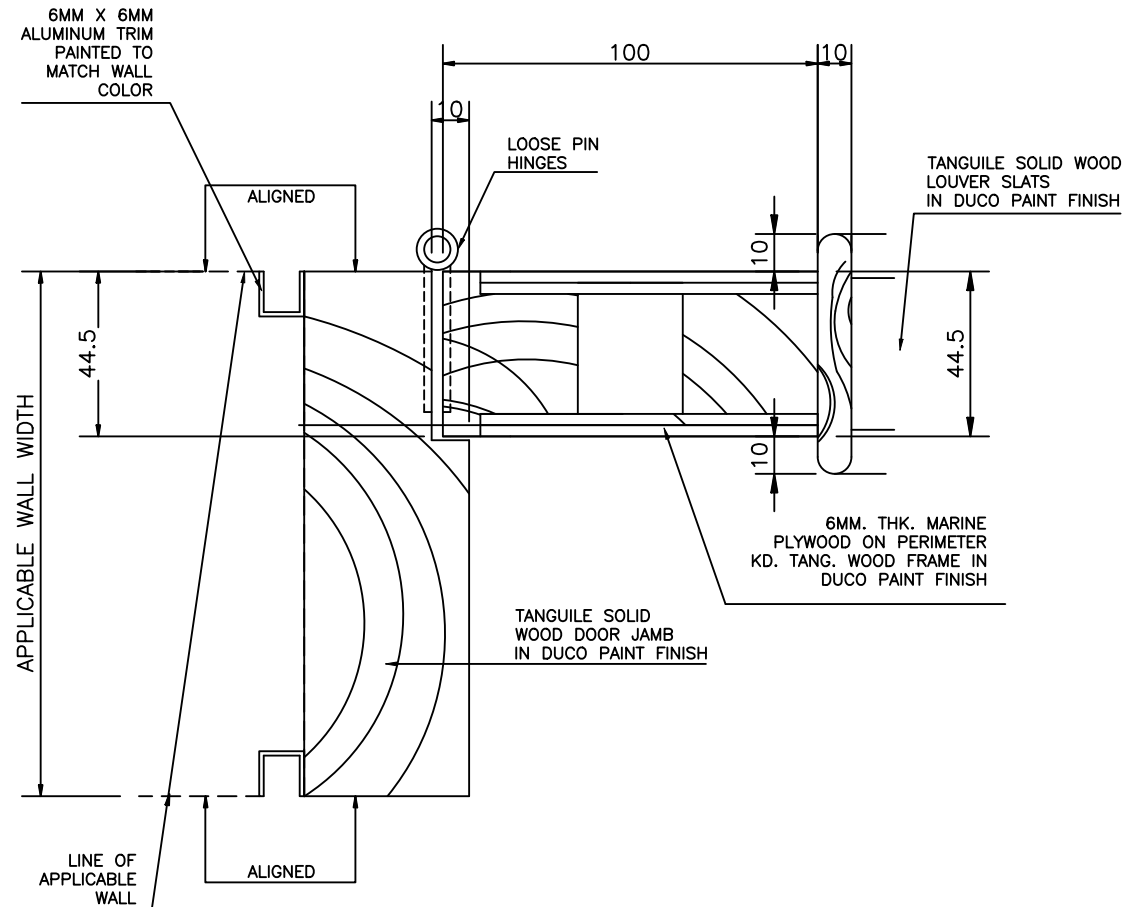
We Build Possibilities.

DBP NAVAL BRANCH

FLUSH HOLLOW CORE(FHC) WOOD DOOR DETAILS



A-1 BASE DETAIL
SCALE 1:2 M.



A-2 JAMB DETAIL
SCALE 1:2 M.

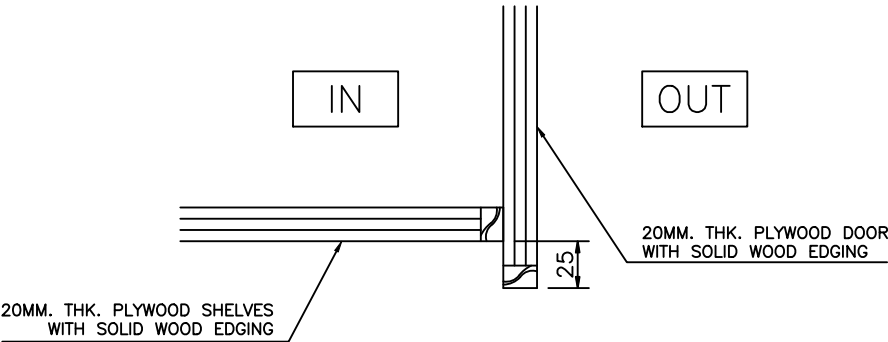


We Build Possibilities.

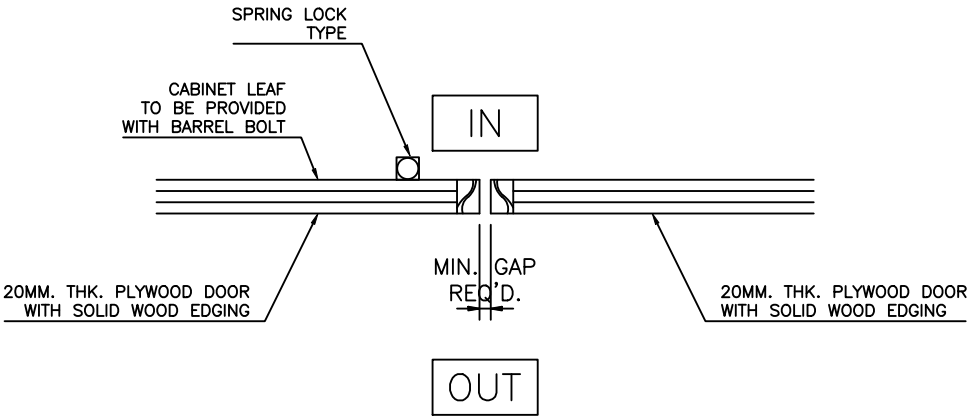
DBP NAVAL BRANCH

FLUSH HOLLOW CORE(FHC) WOOD DOOR DETAILS

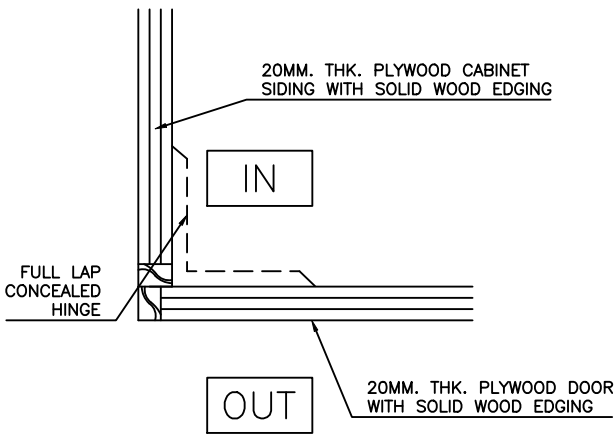
USE WHITE ENAMEL FINISH



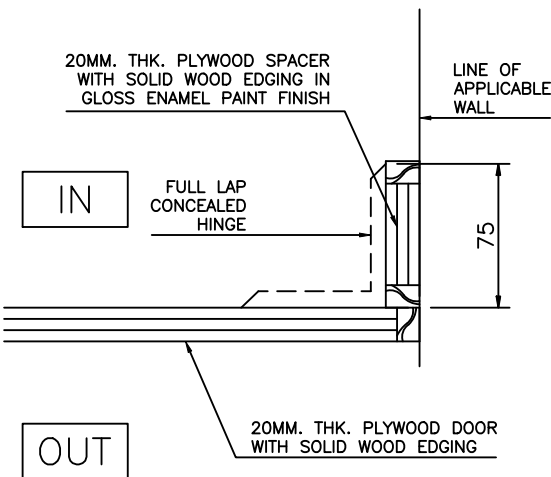
A-5
CCD-1
DETAIL
SCALE 1:4 M.



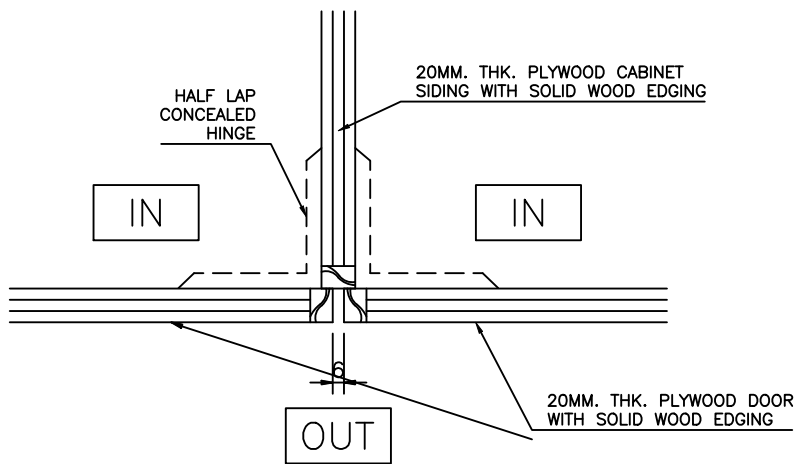
A-4
CCD-1
DETAIL
SCALE 1:4 M.



A-1
DETAIL



A-2
DETAIL



A-3
DETAIL

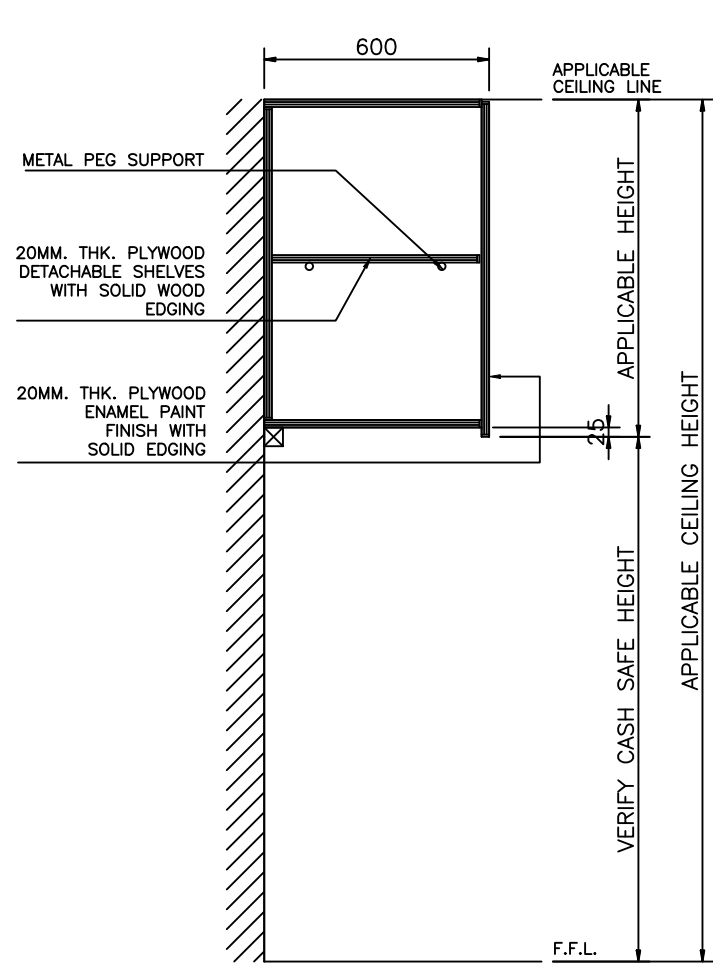


We Build Possibilities.

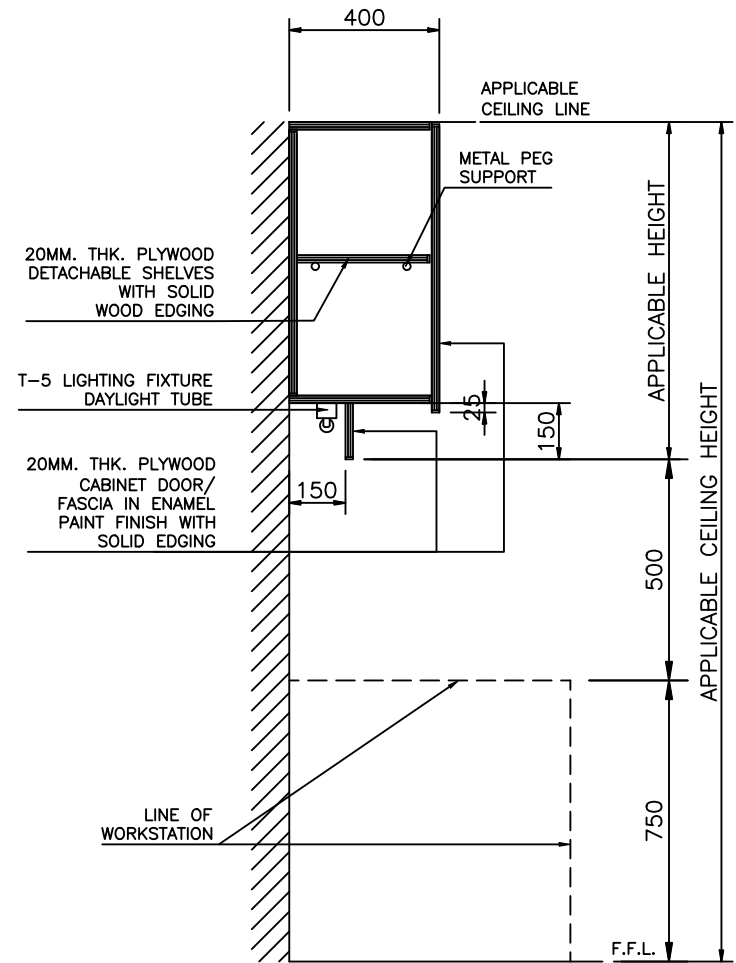
DBP NAVAL BRANCH

CABINET CONNECTIONS DETAILS

USE WHITE ENAMEL FINISH



CASH VAULT OVERHEAD
CABINET DETAILED SECTION



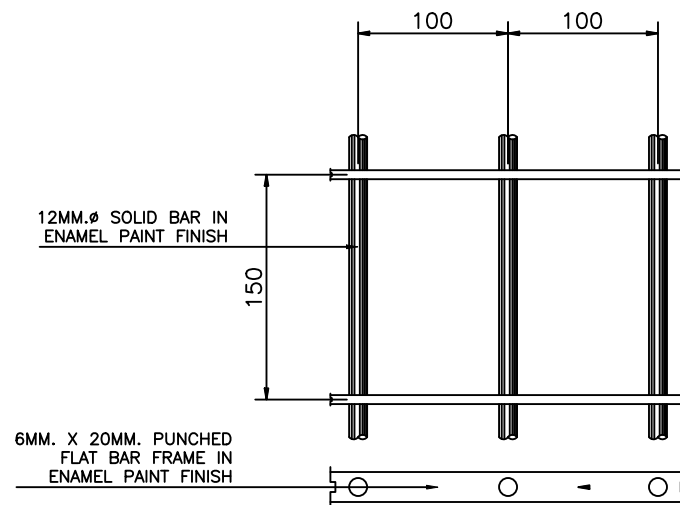
BACKROOM OVERHEAD CABINET
DETAILED SECTION



We Build Possibilities.

DBP NAVAL BRANCH

OVERHEAD CABINET DETAILS



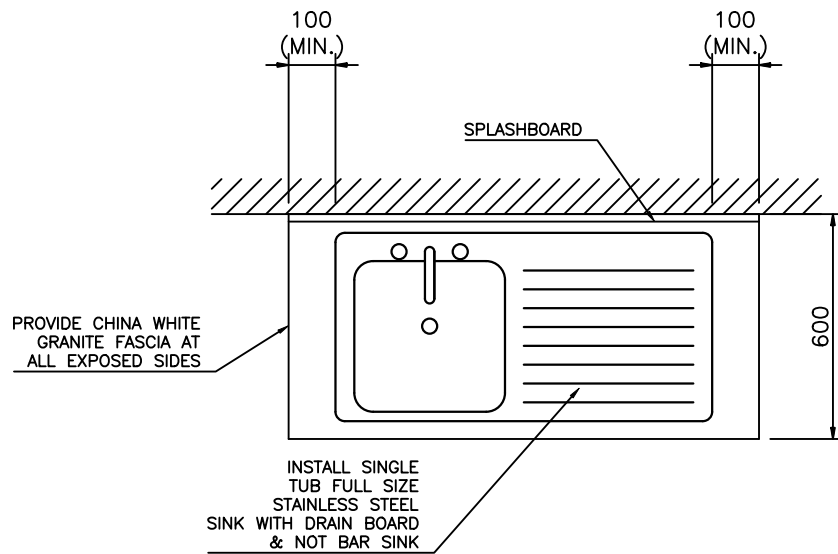
VAULT GRILLE DETAIL



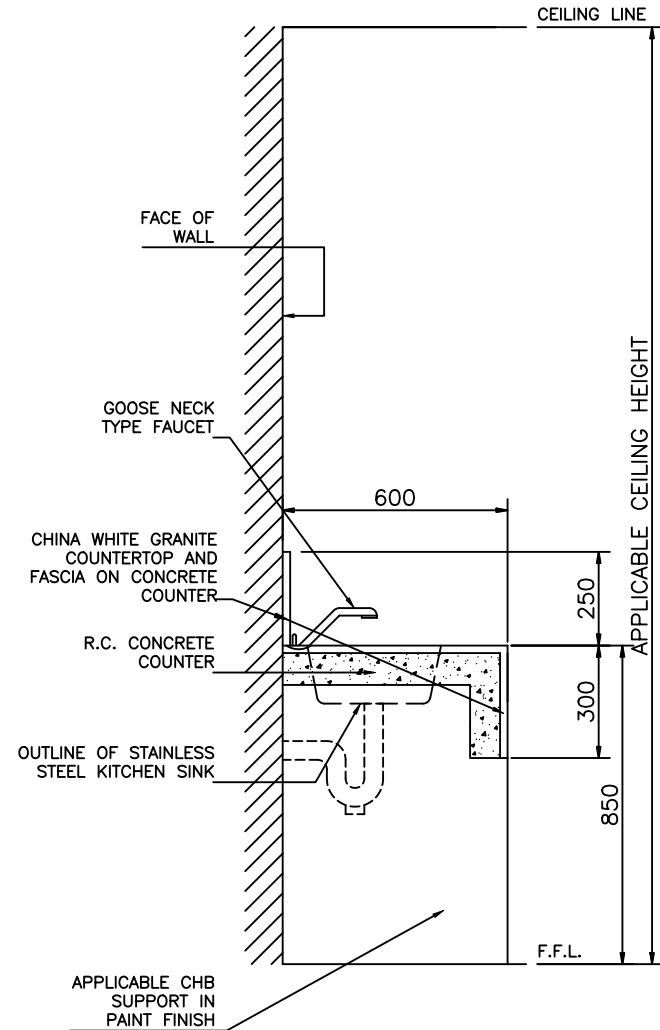
We Build Possibilities.

DBP NAVAL BRANCH

VAULT GRILLE DETAIL



PLAN



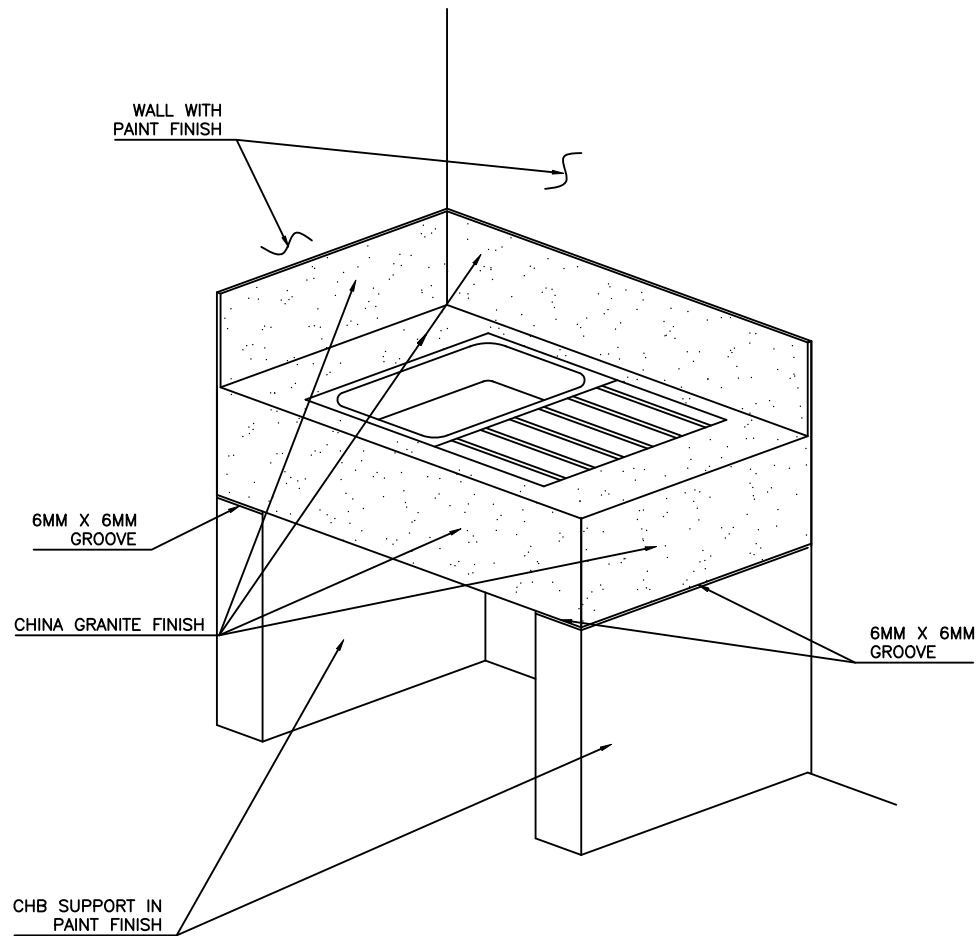
KITCHEN SINK COUNTER SECTION



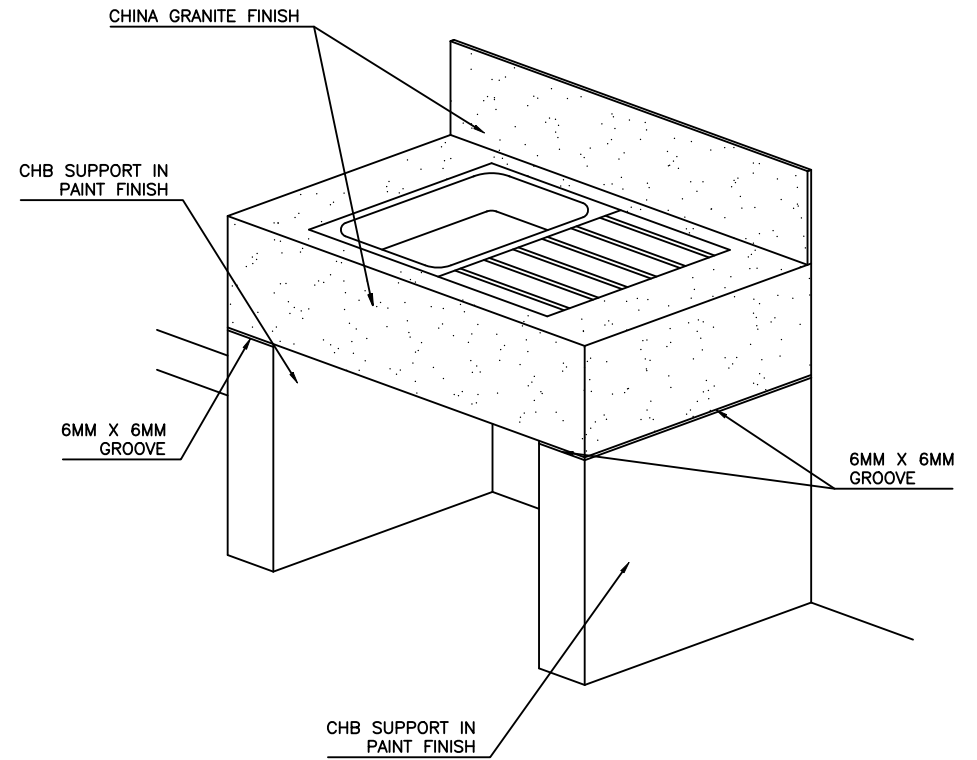
We Build Possibilities.

DBP NAVAL BRANCH

KITCHEN SINK COUNTER DETAILS



COUNTER
ATTACHED TO WALL



COUNTER
WITHOUT WALL ON BOTH SIDES

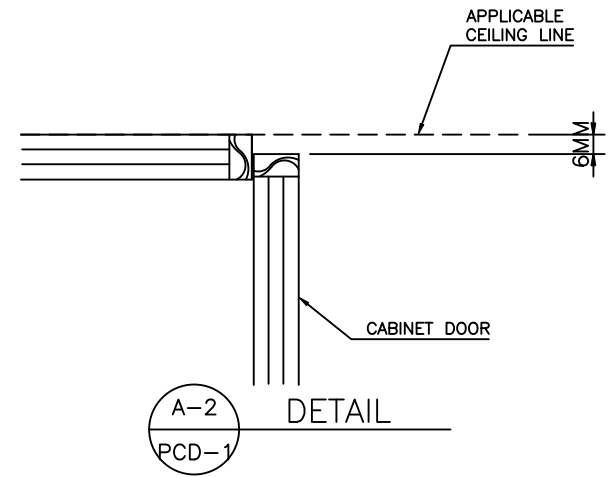
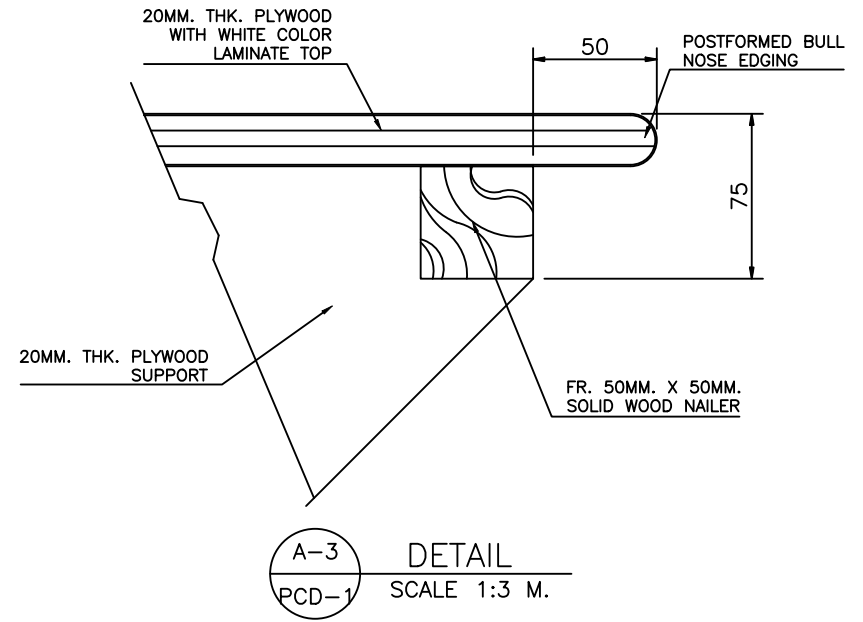
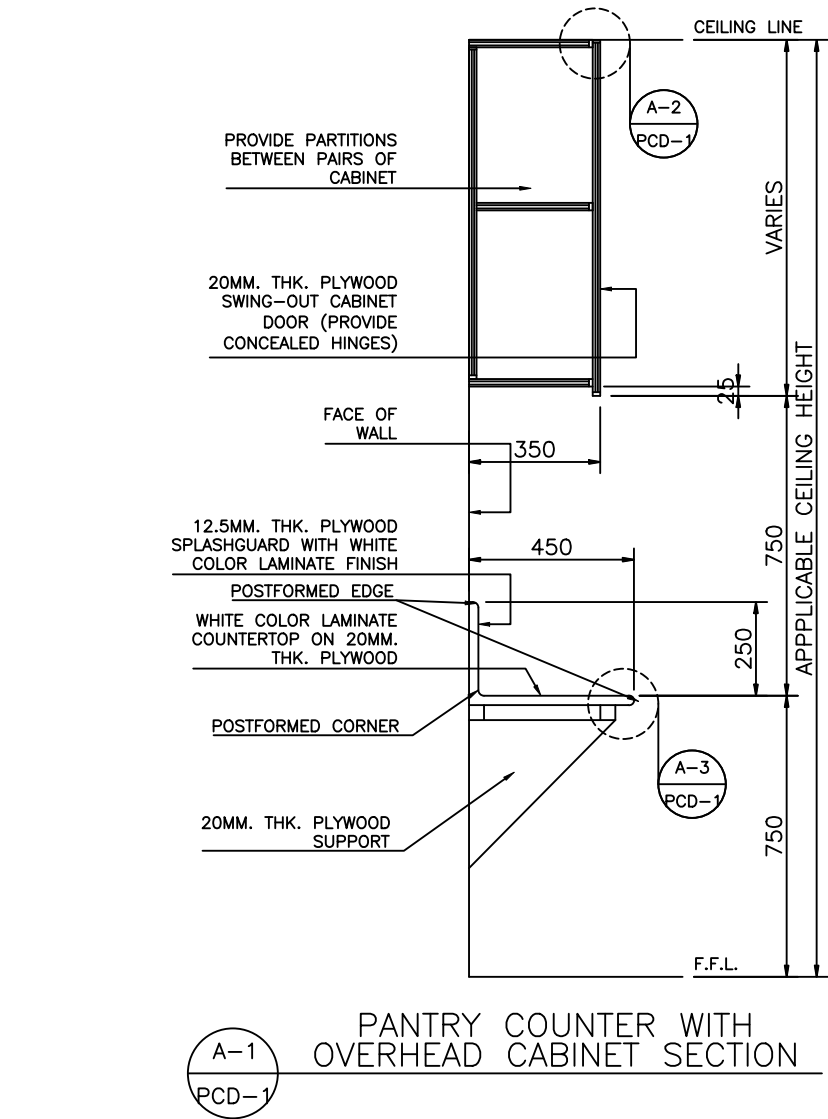


We Build Possibilities.

DBP NAVAL BRANCH

KITCHEN SINK COUNTER DETAILS

USE WHITE ENAMEL FINISH

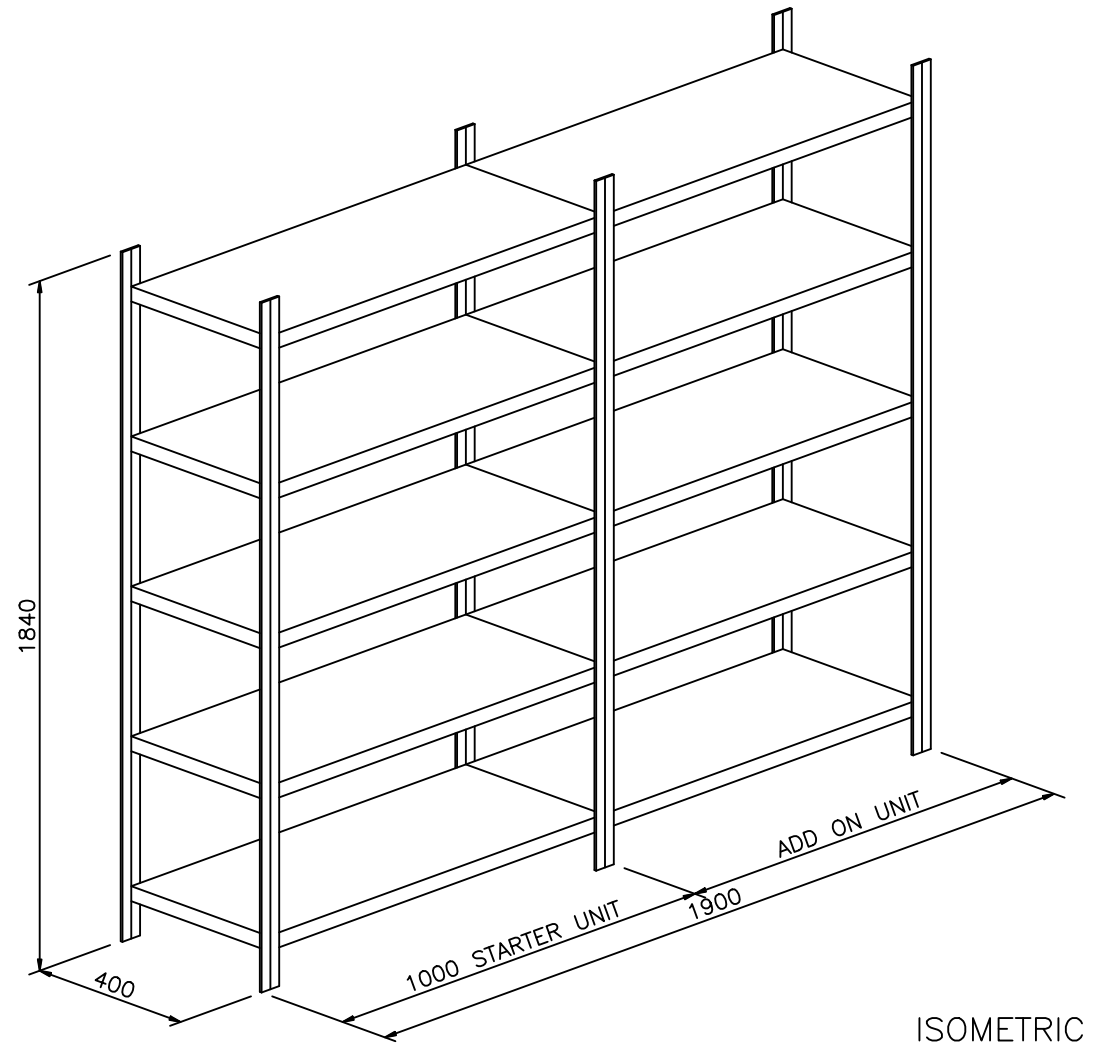


We Build Possibilities.

DBP NAVAL BRANCH

PANTRY COUNTER DETAILS

BOLTLESS SHELVING SYSTEM



HEIGHT : 1840MM.
LENGTH : 900MM.
DEPTH : 400MM.
With 4 Shelf Levels
Capacity per Shelf :150 kgs

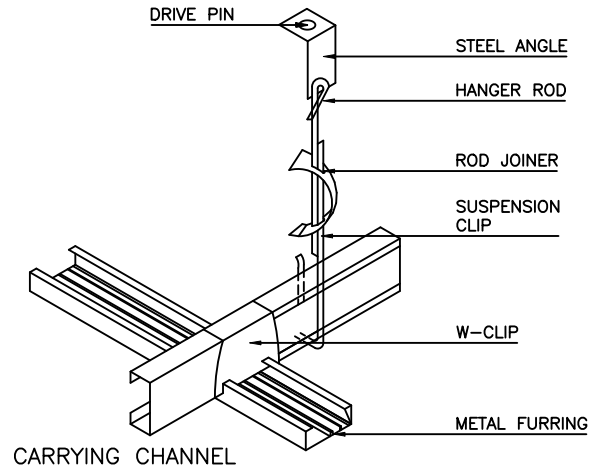


We Build Possibilities.

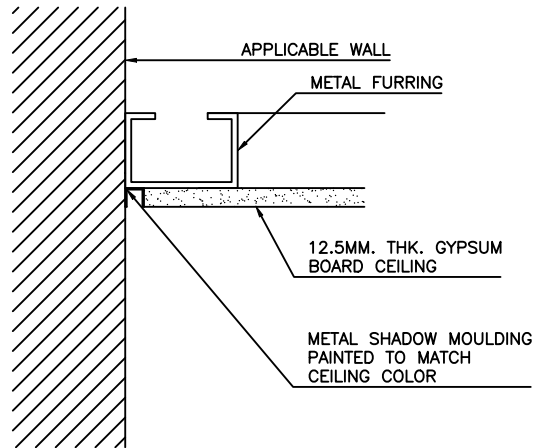
DBP NAVAL BRANCH

ADJUSTABLE STEEL SHELVES DETAILS

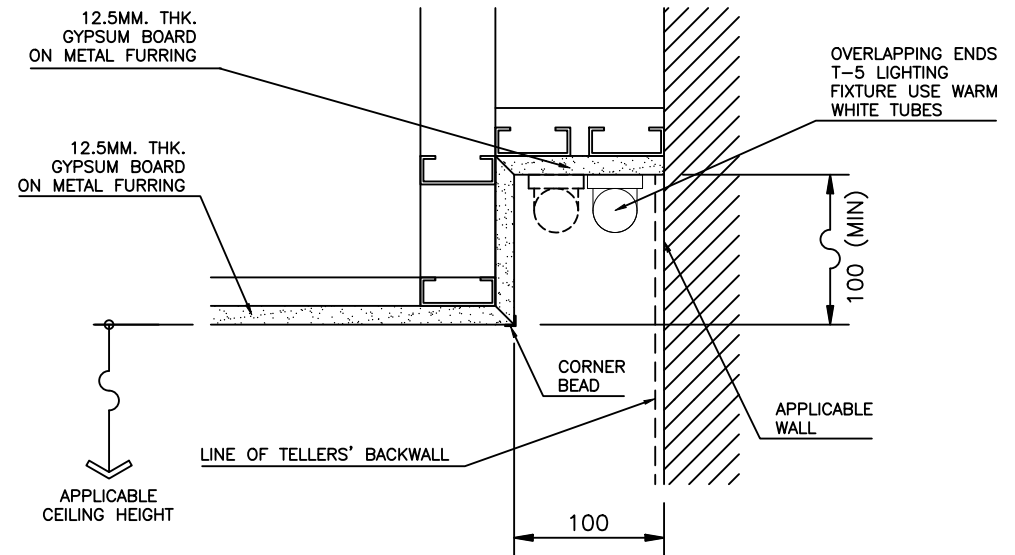
(ATTACHMENT TO CONCRETE SLAB)



HANGER ATTACHMENT DETAIL



TYP. GYPSUM BOARD CONNECTION TO WALL



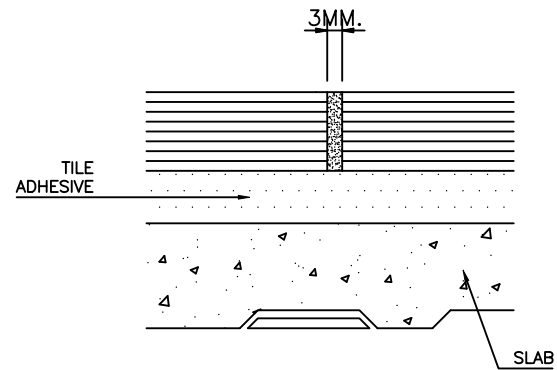
COVE LIGHT DETAIL AT TELLERS BACKWALL



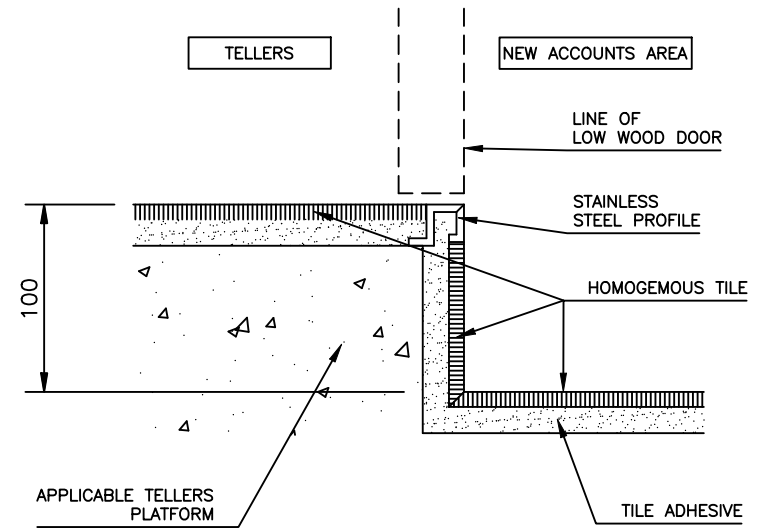
We Build Possibilities.

DBP NAVAL BRANCH

CEILING DETAILS



HOMOGENOUS TILE DETAIL



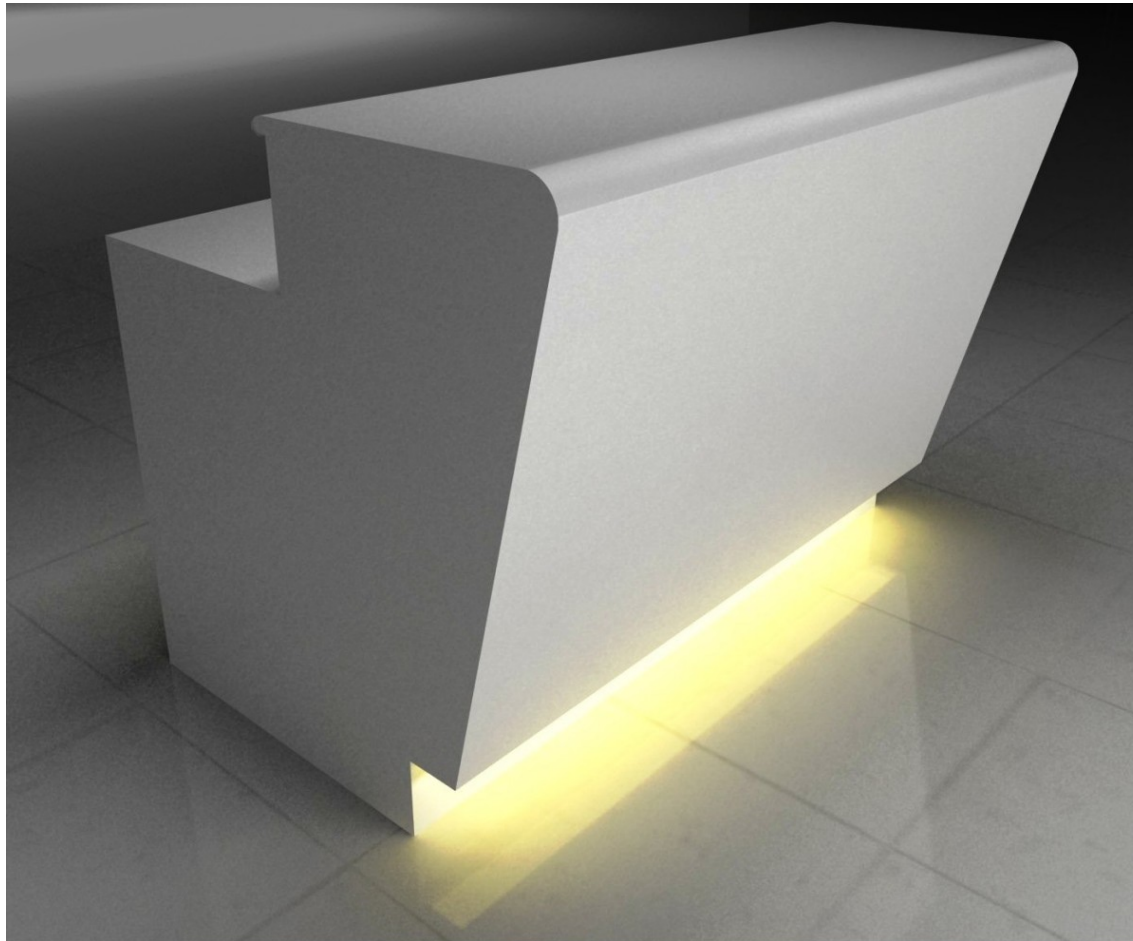
TILING DETAIL AT TELLER'S PLATFORM



We Build Possibilities.

DBP NAVAL BRANCH

FLOOR PAVING PATTERN DETAILS



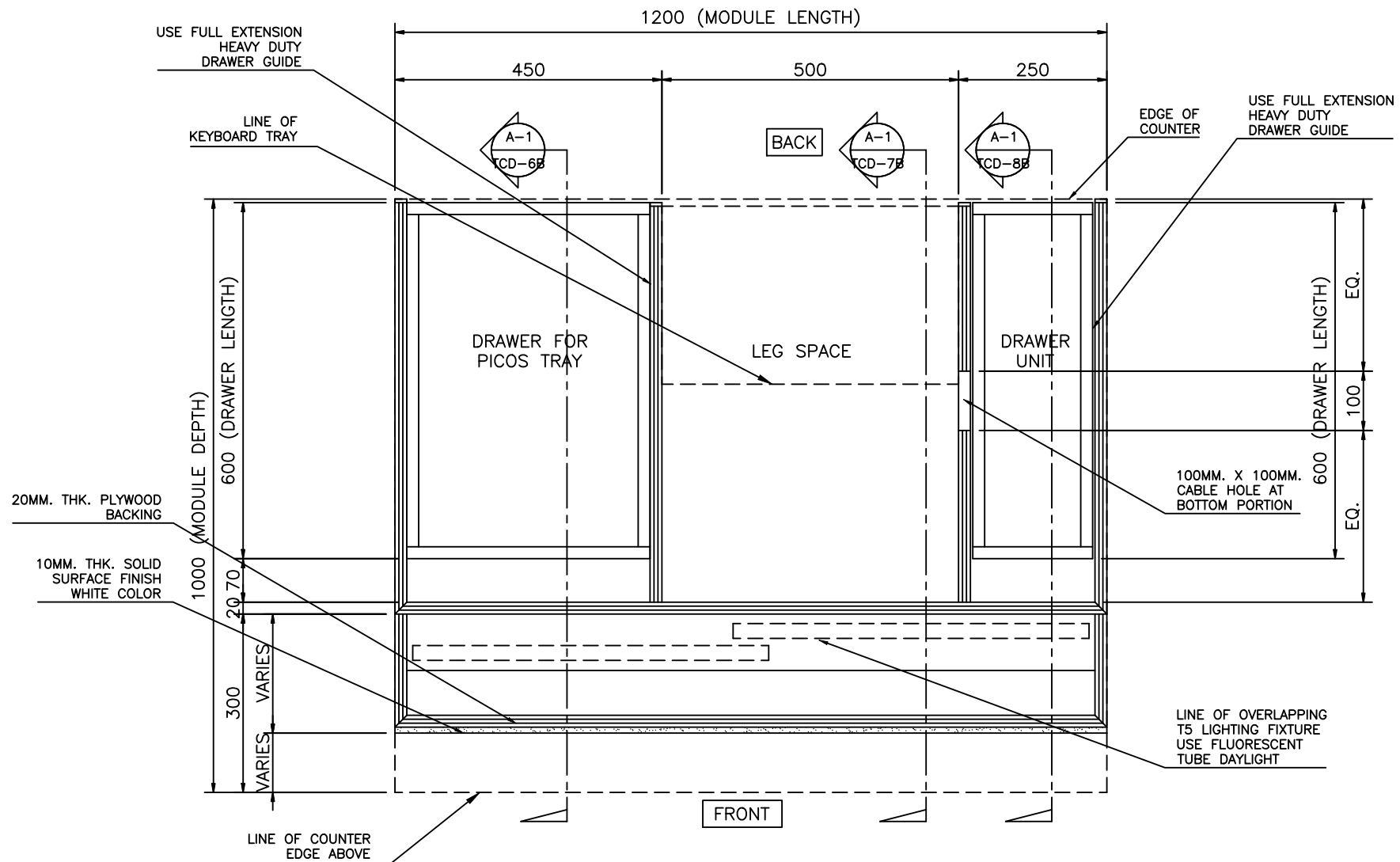
PERSPECTIVE
NOT TO SCALE



We Build Possibilities.

DBP NAVAL BRANCH

TELLERS COUNTER ISOMETRIC



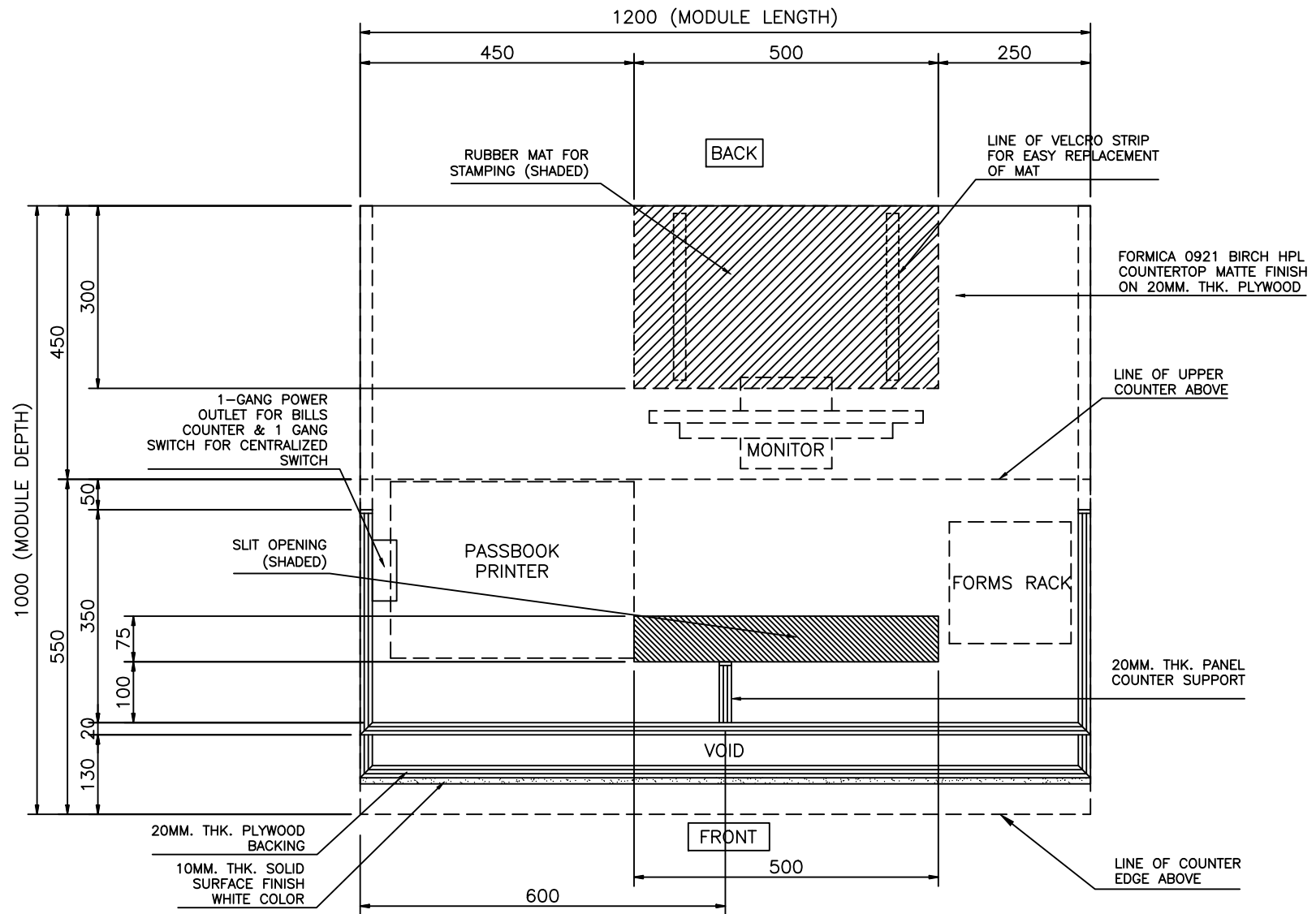
BOTTOM PLAN



We Build Possibilities.

DBP NAVAL BRANCH

TELLERS COUNTER DETAILS
1200 MM LENGTH



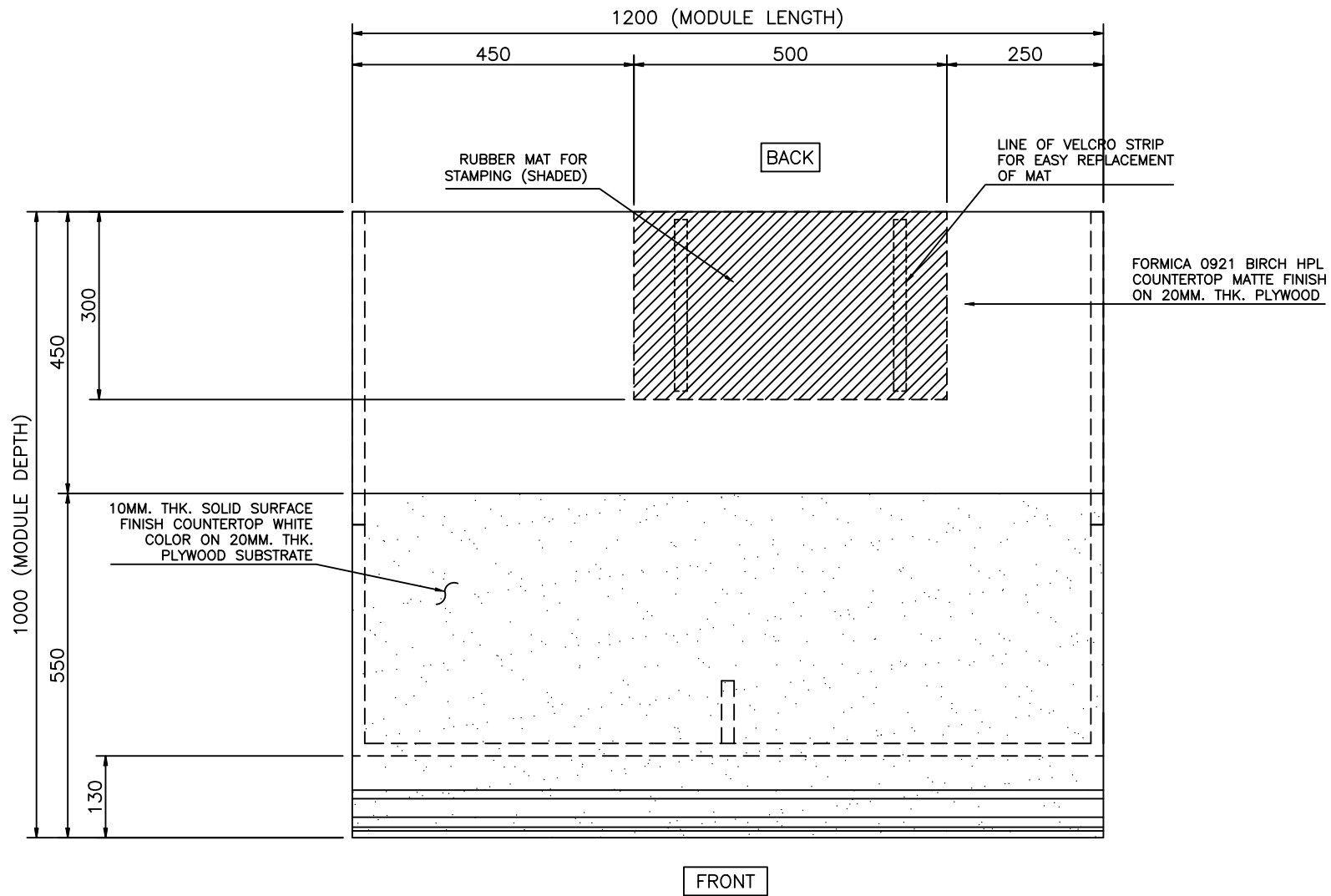
LOWER COUNTERTOP PLAN



We Build Possibilities.

DBP NAVAL BRANCH

TELLERS COUNTER DETAILS
1200 MM LENGTH



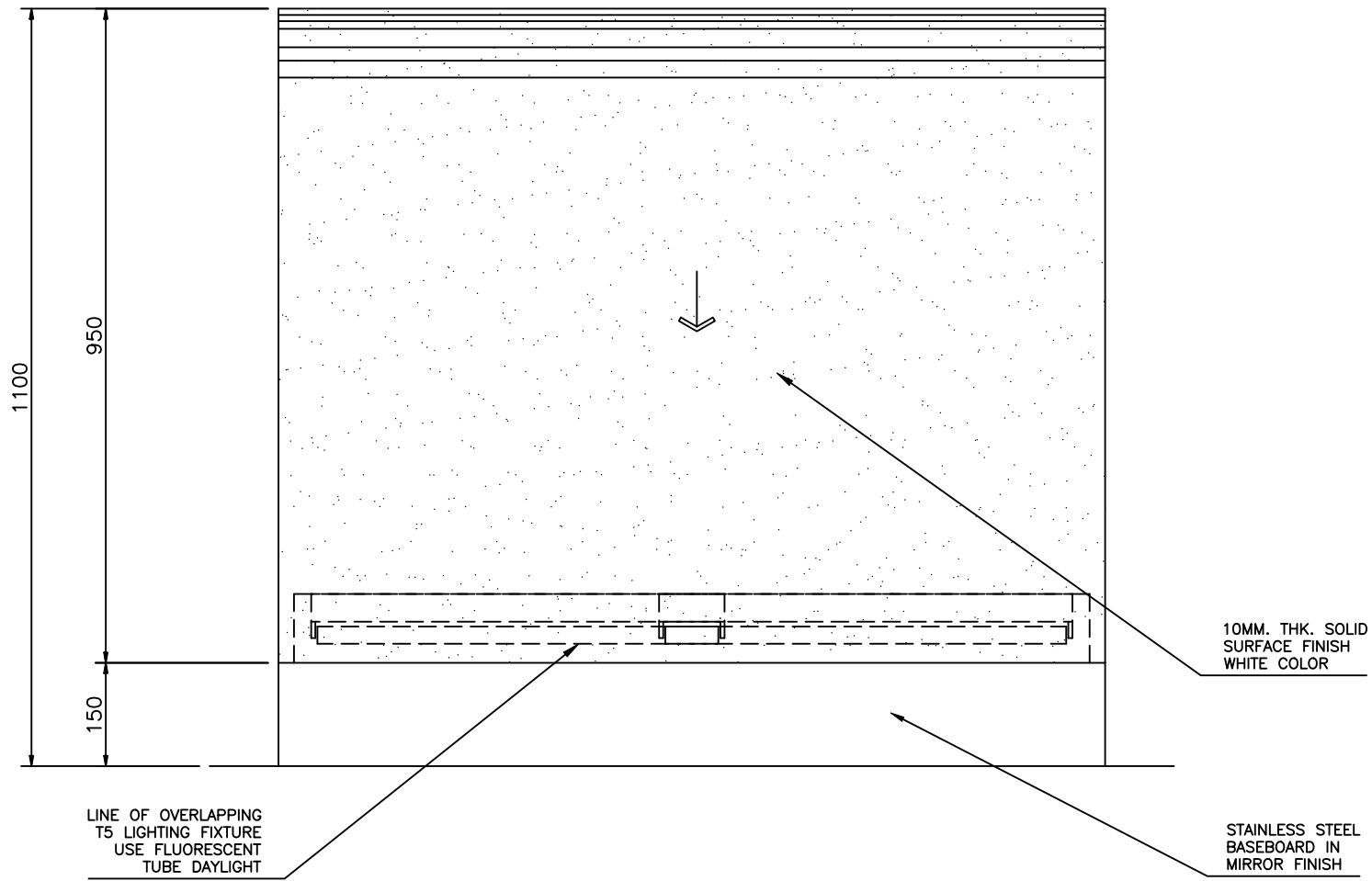
A-1 UPPER COUNTERTOP PLAN
TCD-38 SCALE 1:10 M.



We Build Possibilities.

DBP NAVAL BRANCH

TELLERS COUNTER DETAILS
1200 MM LENGTH



LEGEND :

↓ SLOPE DIRECTION

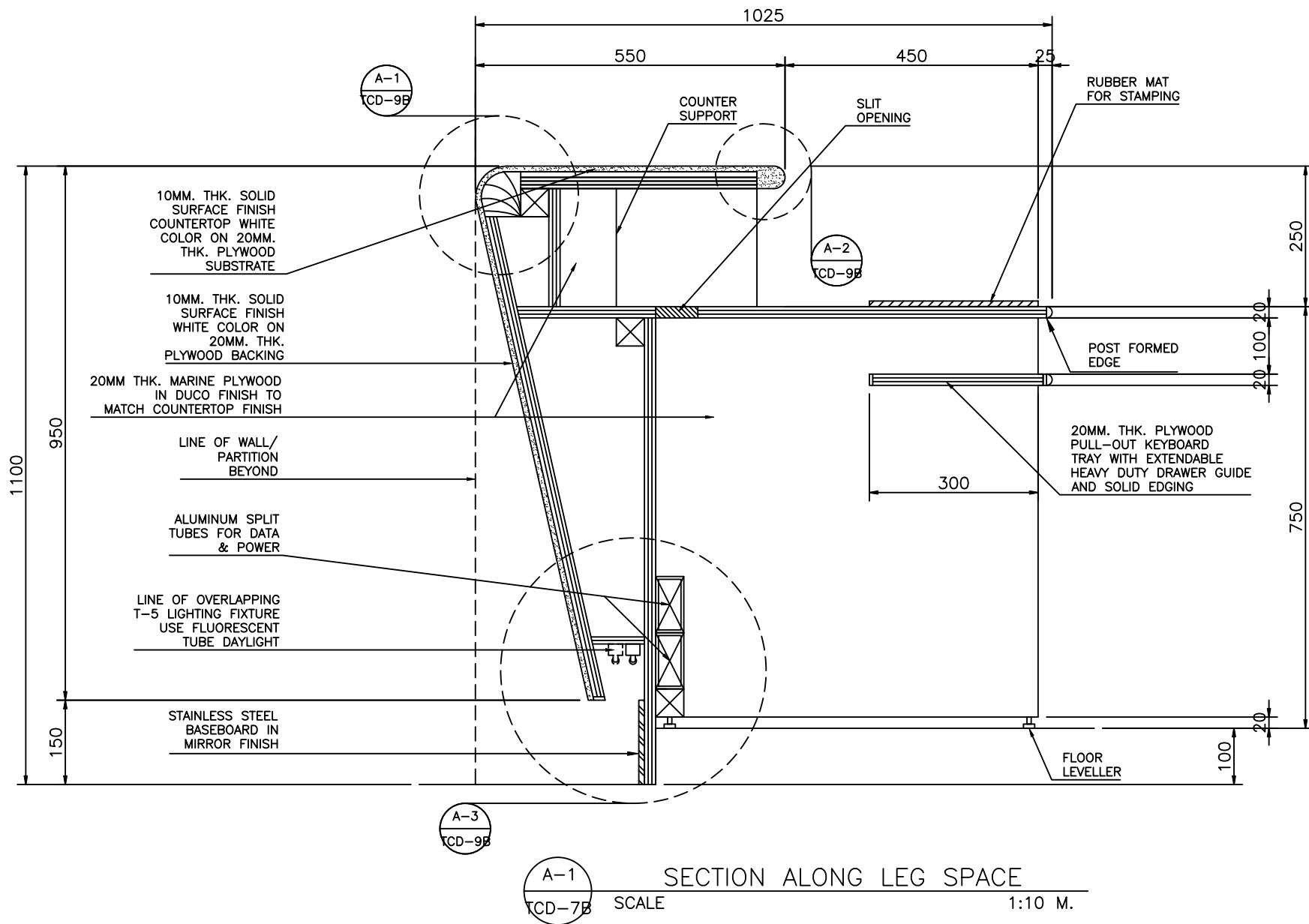
A-1 FRONT ELEVATION
TCD-48 SCALE 1:10 M.



We Build Possibilities.

DBP NAVAL BRANCH

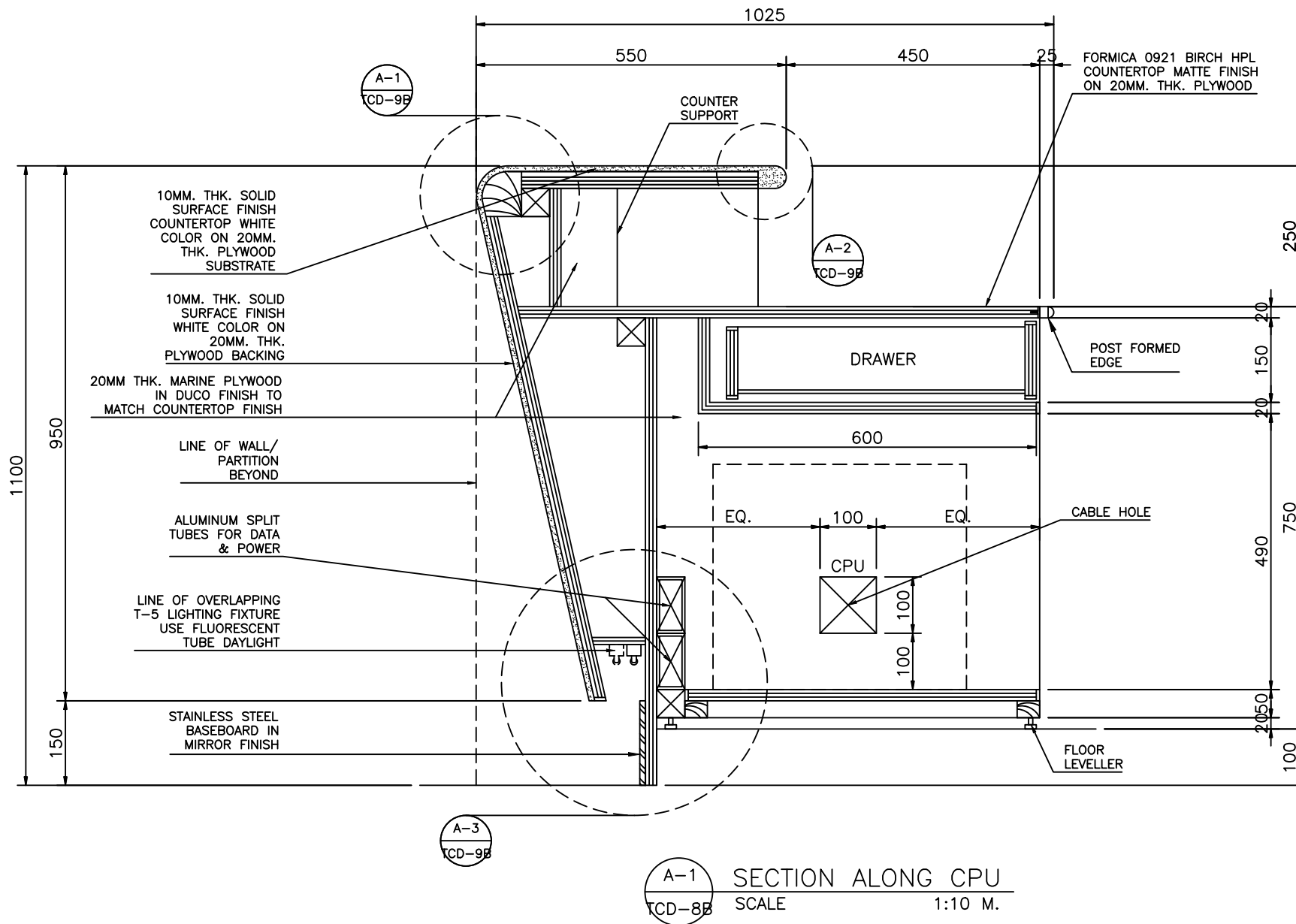
TELLERS COUNTER DETAILS
1200 MM LENGTH



We Build Possibilities.

DBP NAVAL BRANCH

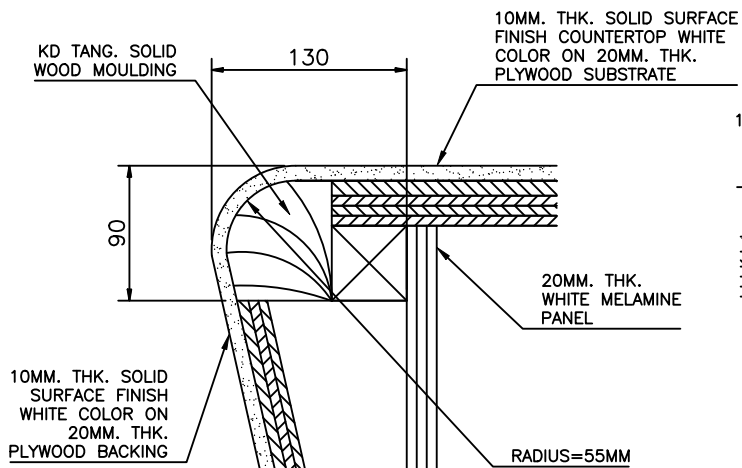
TELLERS COUNTER DETAILS
1200 MM LENGTH



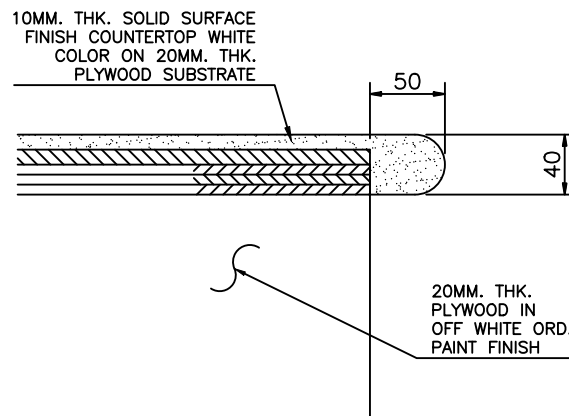
We Build Possibilities.

DBP NAVAL BRANCH

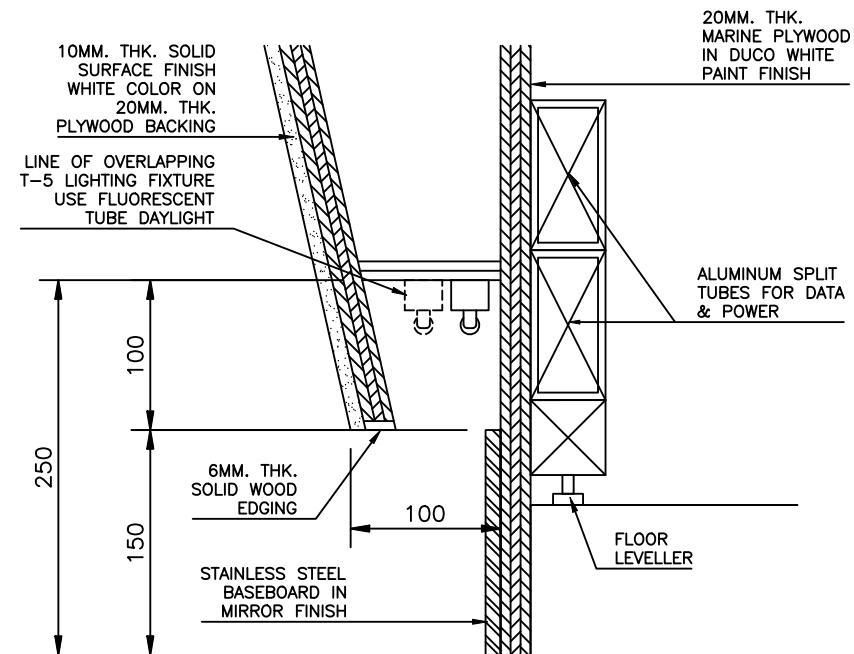
TELLERS COUNTER DETAILS
1200 MM LENGTH



A-1 SPOT DETAIL
TCD-9B SCALE 1:5 M.



A-2 SPOT DETAIL
TCD-9B SCALE 1:5 M.



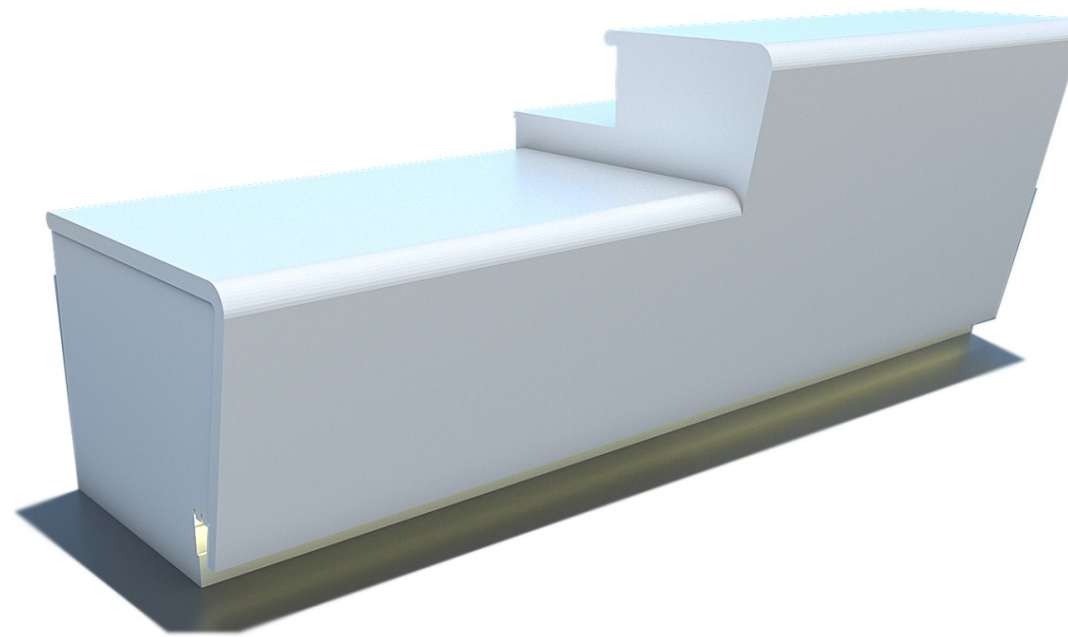
A-3 SPOT DETAIL
TCD-9B SCALE 1:5 M.



We Build Possibilities.

DBP NAVAL BRANCH

TELLERS COUNTER DETAILS
1200 MM LENGTH



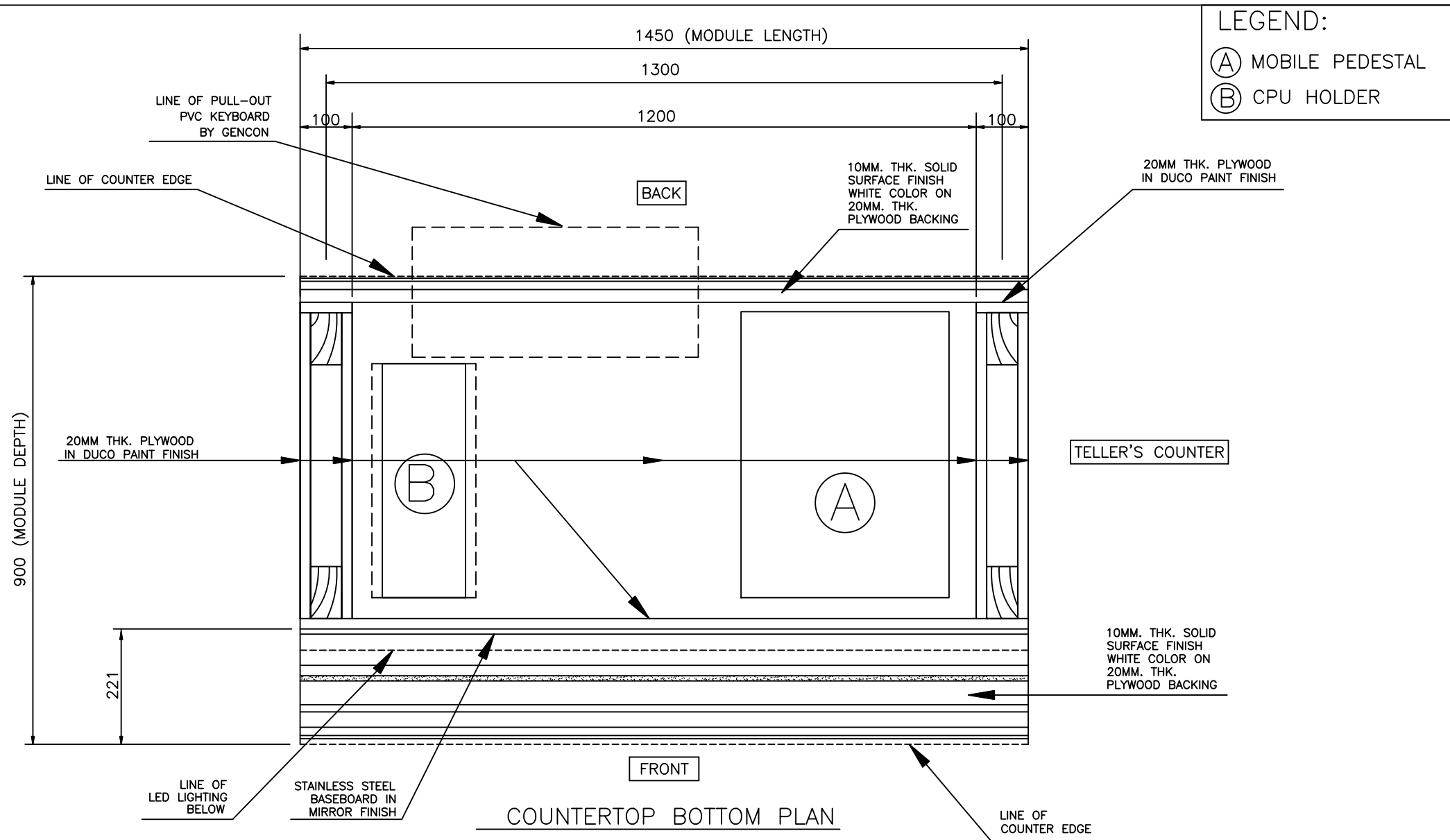
PERSPECTIVE
NOT TO SCALE



We Build Possibilities.

DBP NAVAL BRANCH

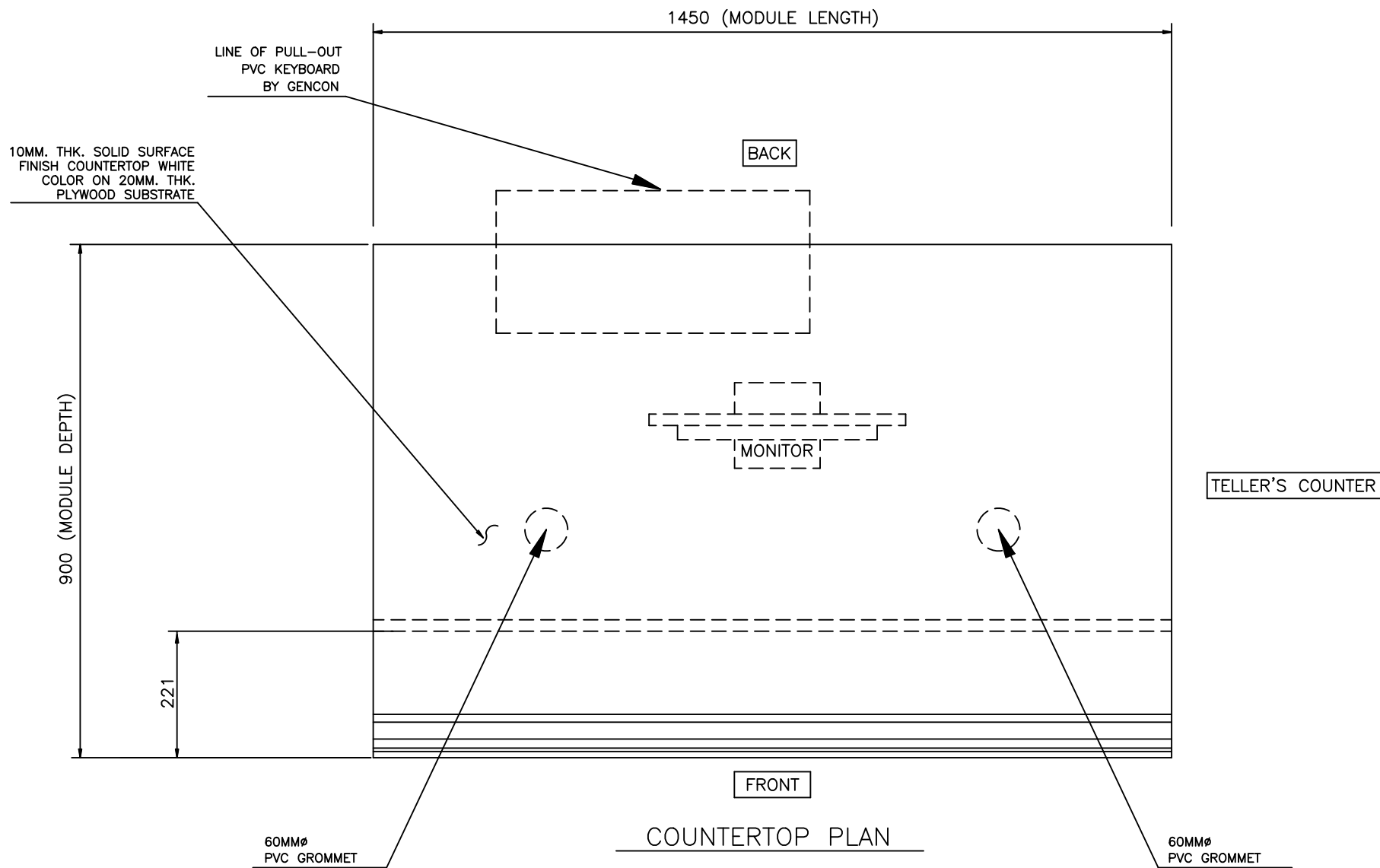
NEW ACCOUNTS COUNTER ISOMETRIC



We Build Possibilities.

DBP NAVAL BRANCH

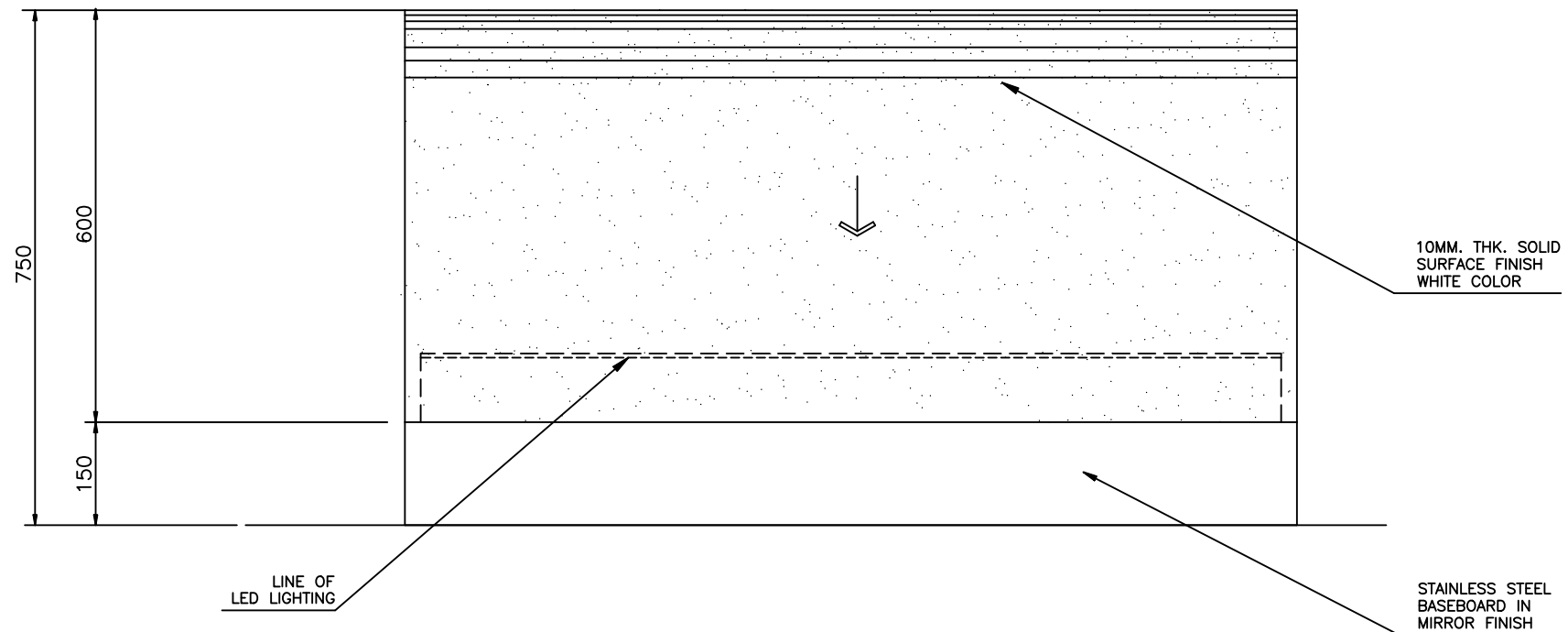
NEW ACCOUNTS COUNTER DETAILS
1450 MM LENGTH



We Build Possibilities.

DBP NAVAL BRANCH

NEW ACCOUNTS COUNTER DETAILS
1450 MM LENGTH



FRONT ELEVATION

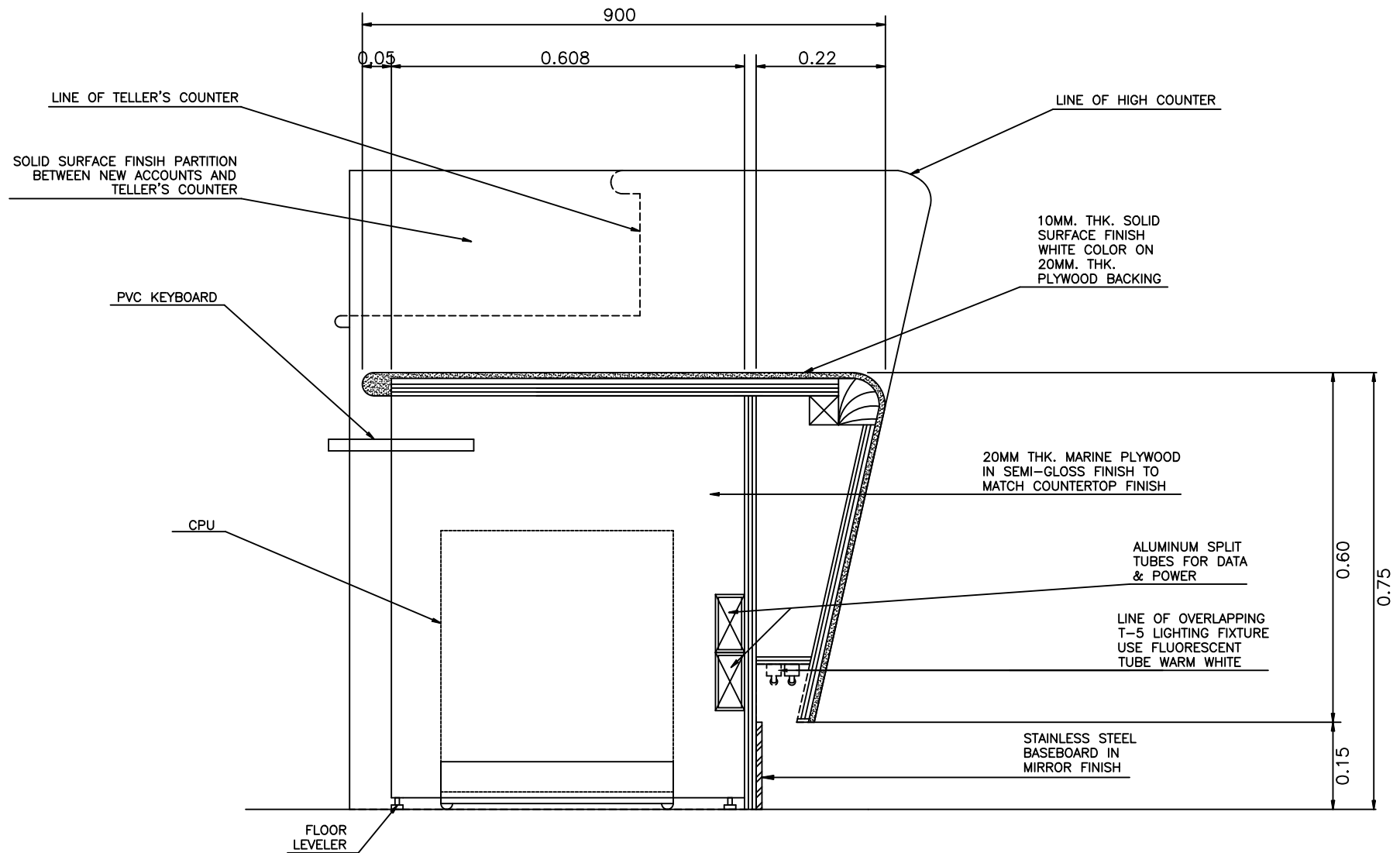
LEGEND :
↓ SLOPE DIRECTION



We Build Possibilities.

DBP NAVAL BRANCH

NEW ACCOUNTS COUNTER DETAILS
1450 MM LENGTH



SECTION ALONG CPU



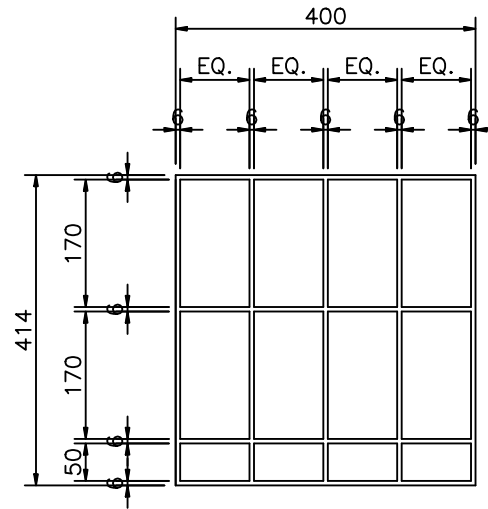
We Build Possibilities.

DBP NAVAL BRANCH

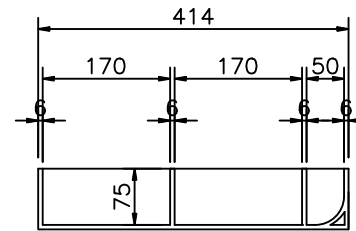
NEW ACCOUNTS COUNTER DETAILS
1450 MM LENGTH

NOTE :

USE 6MM. THK. CLEAR ACRYLIC FOR ALL COMPONENTS OF PICOS TRAY

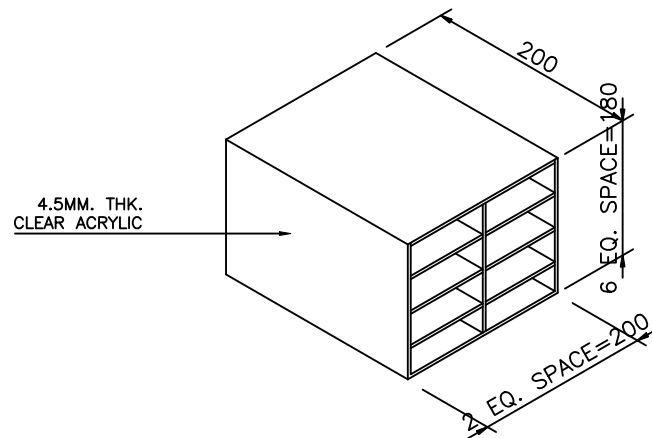


PLAN

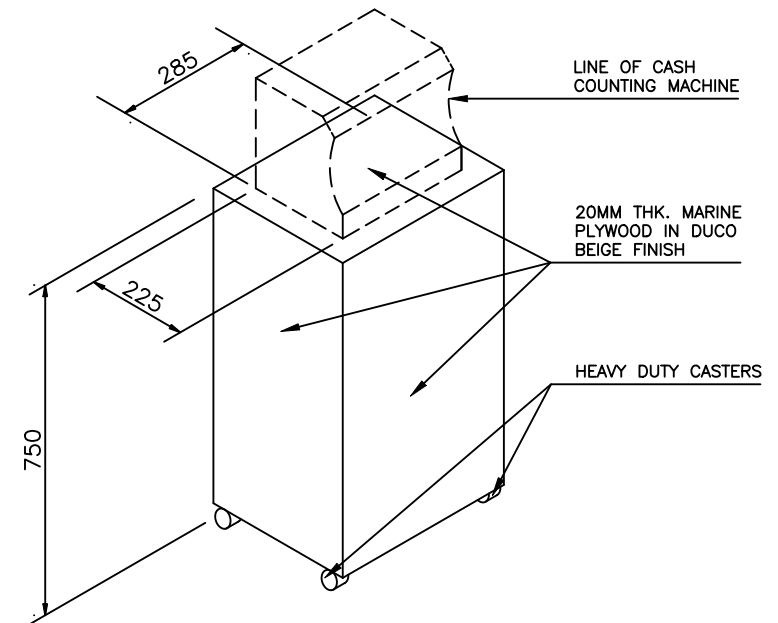


SECTION

PICOS TRAY DETAILS



ISOMETRIC-FORMS RACK



MONEY COUNTER MODULE



We Build Possibilities.

DBP NAVAL BRANCH

TELLERS COUNTER ACCESSORIES DETAILS

FORMS COUNTER DETAILS



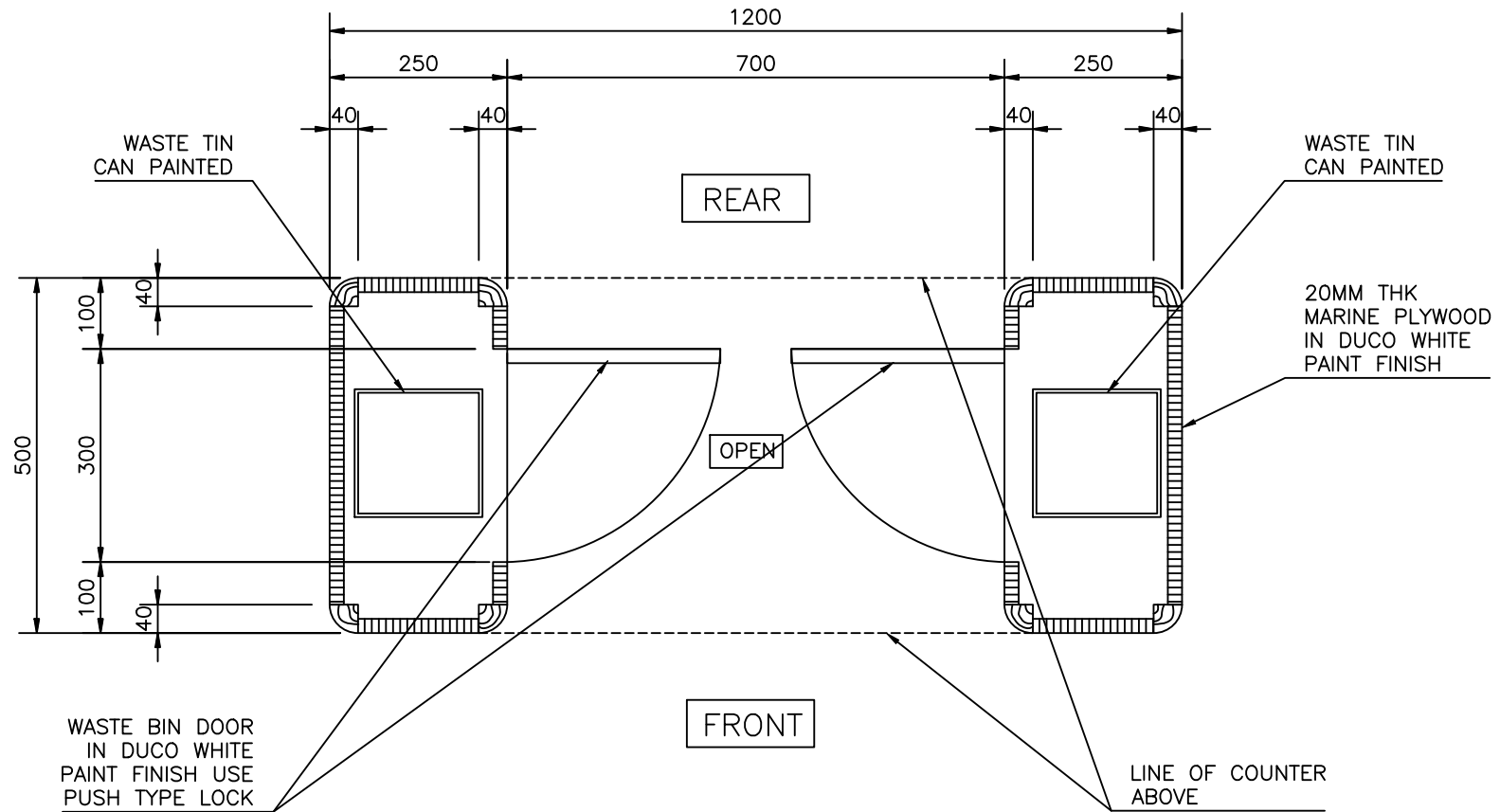
PERSPECTIVE



We Build Possibilities.

DBP NAVAL BRANCH

FORMS COUNTER DETAILS



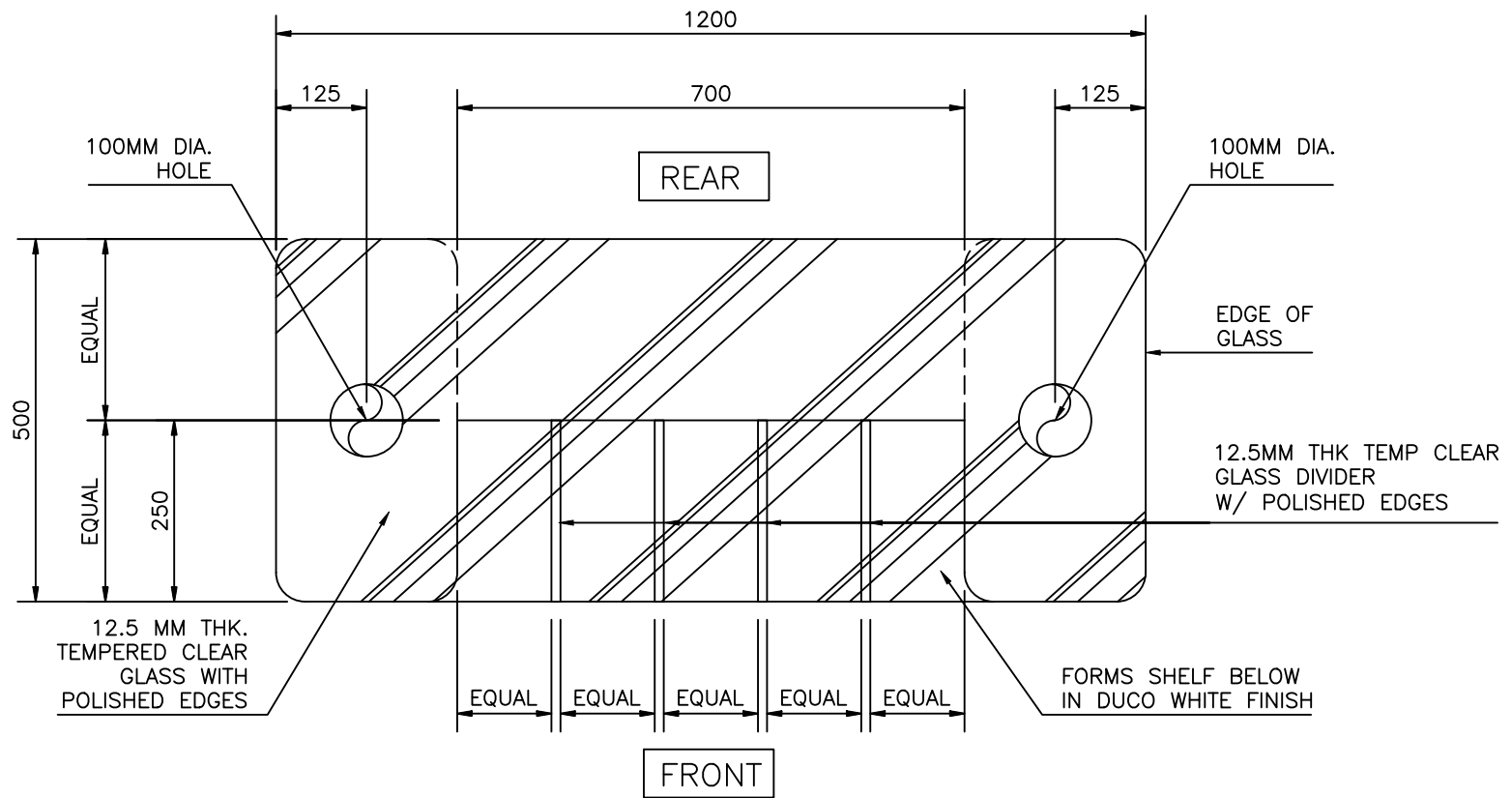
BOTTOM PLAN



We Build Possibilities.

DBP NAVAL BRANCH

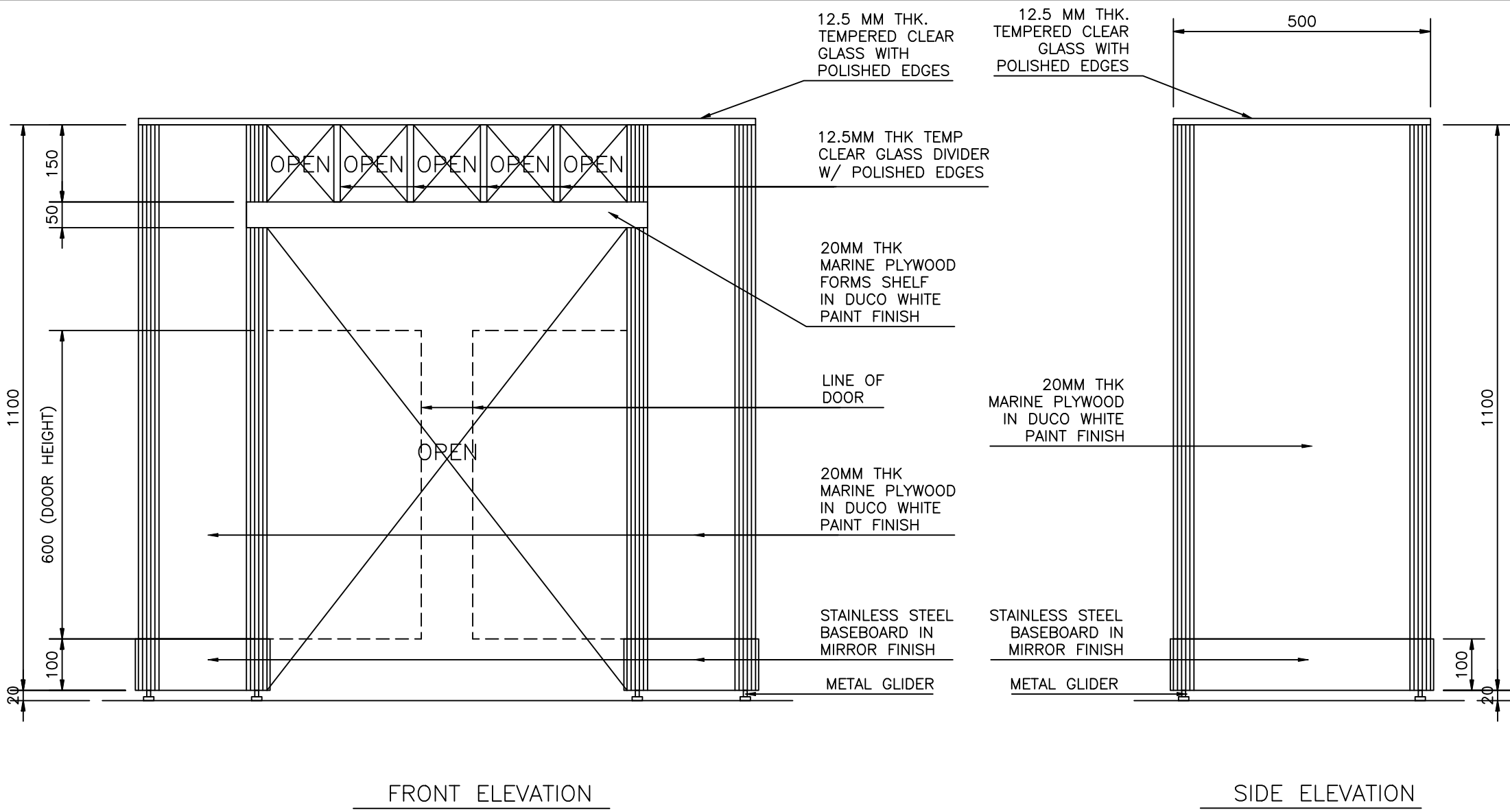
FORMS COUNTER DETAILS



We Build Possibilities.

DBP NAVAL BRANCH

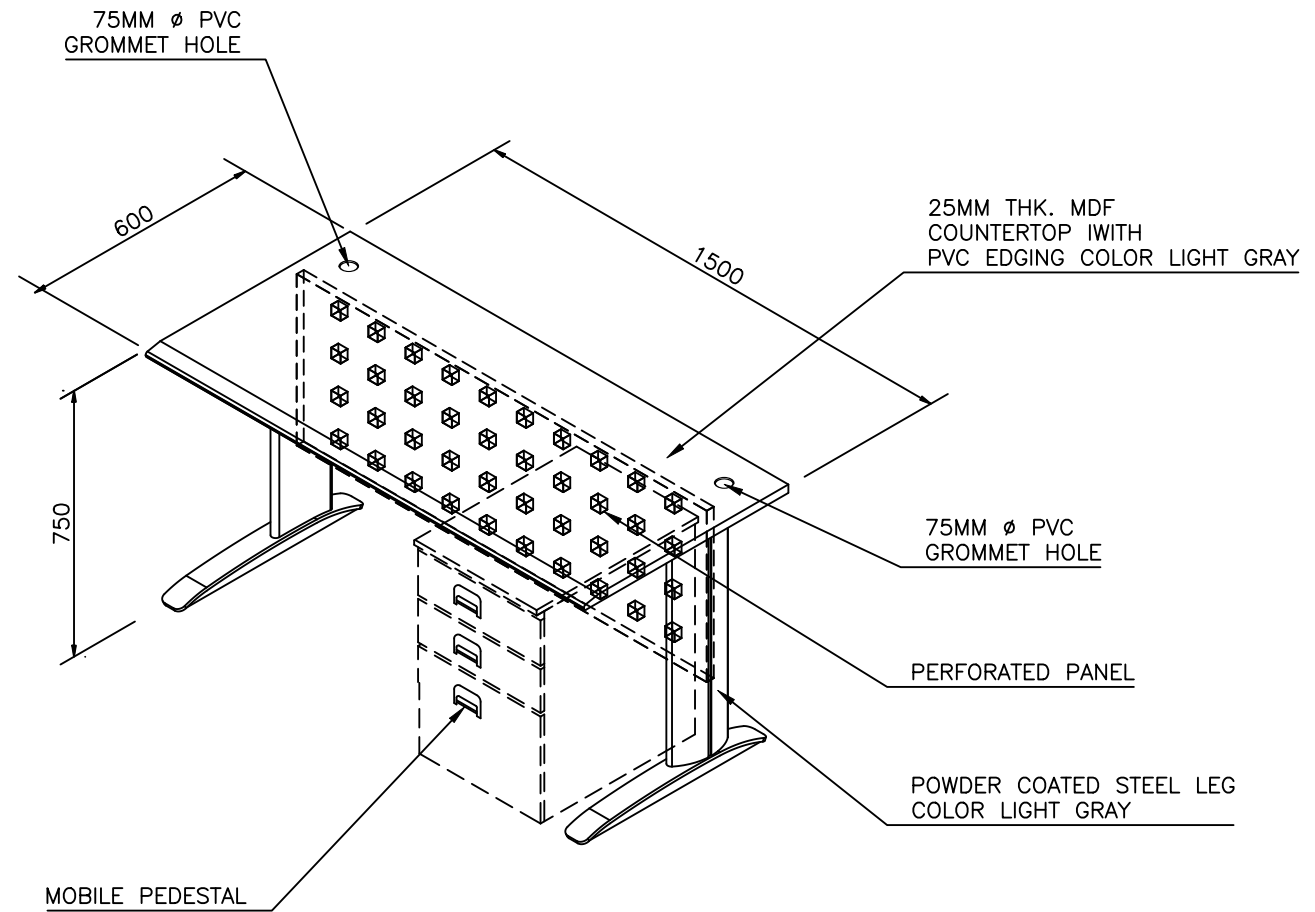
FORMS COUNTER DETAILS



We Build Possibilities.

DBP NAVAL BRANCH

FORMS COUNTER DETAILS



ISOMETRIC



We Build Possibilities.

DBP NAVAL BRANCH

WORKSTATION DETAIL
STAFF



SPECIFICATION:

MATERIALS: STEEL/POWDER COATED FINISH WITH CASTERS

FINISH: POWDER COATED WITH ANTI-RUST PROTECTION

FEATURES: RECESSED HANDLE WITH LOCK AND KEYS, BLACK PLASTIC DIVIDER AND TRAYS

COLOR: LIGHT GRAY

DIMENSION: 400MM (W) X 560MM (D) X 660MM (H)
SIZE TOLERANCE (± 25.4 MM IN EITHER DIRECTION)

NOTE: DESIGN SHOULD BE THE SAME OR SIMILAR AS THE ATTACHED PHOTO

MOBILE PEDESTAL

PERSPECTIVE



We Build Possibilities.

DBP NAVAL BRANCH

MOBILE PEDESTAL



SPECIFICATION:

MATERIALS: COLD-ROLLED STEEL PALTE GAUGE #20

FINISH: POWDER COATED WITH ANTI-RUST PROTECTION

FEATURES: RECESSED HANDLE, CENTRALIZED LOCKING SYSTEM WITH
BLACK PLASTIC DIVIDER PER DRAWER

COLOR: LIGHT GRAY

DIMENSION: 900MM (W) X 450MM (D) X 1060MM (H)
SIZE TOLERANCE (\pm 25.4MM IN EITHER DIRECTION)

NOTE: DESIGN SHOULD BE THE SAME OR SIMILAR AS THE ATTACHED PHOTO

3 DRAWER LATERAL FILE CABINET

PERSPECTIVE



We Build Possibilities.

DBP NAVAL BRANCH

LATERAL FILE CABINET



VISITOR'S CHAIR

PERSPECTIVE

SPECIFICATION:

MATERIALS: FABRIC MOULDED FOAM-CUSHION
UPHOLSTERED SEAT AND BACK; WITHOUT ARMREST;
GAUGE 18 STEEL WITH $\frac{5}{8}$ " ROUND-TUBULAR
CONSTRUCTION CHROME FINISH (SLED TYPE LEG) AND
POLY FLOOR GLIDES

COLOR: TWILIGHT BLUE

WEIGHT CAPACITY: MIN. OF 112 KGS

NOTE: DESIGN SHOULD BE THE SAME OR SIMILAR AS
THE ATTACHED PHOTO



We Build Possibilities.

DBP NAVAL BRANCH

VISITOR'S CHAIR SPECIFICATIONS



SPECIFICATION:

EXECUTIVE HIGH BACK CHAIR LEATHERETTE
CUSHION SEAT W/ MOULDED FOAM-CUSHION
UPHOLSTERED BACKREST; PADDED ARMREST; GAS
LIFT; CHROME PLATED STAR BASE; TILTING/SWIVEL
MECHANISM AND TWIN CASTER.

COLOR: BLACK

USED BY: BBG/PLG HEAD/BRANCH/LC HEAD

BRANCH HEAD CHAIR

PERSPECTIVE



We Build Possibilities.

DBP NAVAL BRANCH

BRANCH HEAD CHAIR



MID BACK CHAIR

SPECIFICATION:

FABRIC MOULDED-CUSHION UPHOLSTERED
BACKREST AND SEAT; W/ ARM REST; GAS LIFT;
TILTING/SWIVEL MECHANISM; FIVE (5) LEGGED
CHAIR W/ CASTER.

COLOR: BLUE

USED BY: JUNIOR OFFICER

PERSPECTIVE



We Build Possibilities.

DBP NAVAL BRANCH

BSO / CASHIER CHAIR



TELLER'S CHAIR

PERSPECTIVE

SPECIFICATION:

MATERIALS: FABRIC MOULDED FOAM-CUSHION
UPHOLSTERED SEAT AND BACK REST; WITHOUT
ARMREST; GAS LIFT; TILTING/SWIVEL MECHANISM;
FIVE-LEGGED WITH FOOT RING; FIXED BASE

COLOR: TWILIGHT BLUE

NOTE: DESIGN SHOULD BE THE SAME OR SIMILAR AS
THE ATTACHED PHOTO



We Build Possibilities.

DBP NAVAL BRANCH

TELLER'S CHAIR



NAC/STAFF CHAIR

PERSPECTIVE

SPECIFICATION:

MATERIAL: FABRIC MOULDED-CUSHION UPHOLSTERED BACKREST AND SEAT; WITH ARM REST; GAS LIFT; TILTING/SWIVEL MECHANISM; FIVE (5) LEGGED CHAIR WITH CASTER.

COLOR: TWILIGHT BLUE

NOTE: DESIGN SHOULD BE THE SAME OR SIMILAR AS THE ATTACHED PHOTO



We Build Possibilities.

DBP NAVAL BRANCH

NAC/STAFF CHAIR



SPECIFICATION:

4-SEATER LEATHERETTE MOULDED FOAM CUSHION UPHOLSTERED BACKREST AND SEAT WITH ARMREST AND STEEL FRAME LEGS.

COLOR: BLACK LEATHERETTE AND MATTE SILVER FOR THE STEEL BASE

NOTE: DESIGN SHOULD BE THE SAME OR SIMILAR AS THE ATTACHED PHOTO

4-SEATER GANG CHAIR

PERSPECTIVE



We Build Possibilities.

DBP NAVAL BRANCH

4-SEATER GANG CHAIR



PANTRY CHAIR

PERSPECTIVE

SPECIFICATION:

MATERIAL: LEATHERETTE MOULDED FOAM—CUSHION SEAT; WITHOUT ARMREST AND BACKREST; 1" X 1" TUBULAR STEEL FRAME IN POWDER COATED MATTE SILVER FINISH.

SEAT DIMESNION: 330MM X 330MM

SEAT HEIGHT: 460MM

FOAM THICKNESS: 2" THK.

NOTE: DESIGN SHOULD BE THE SAME OR SIMILAR AS THE ATTACHED PHOTO.



We Build Possibilities.

DBP NAVAL BRANCH

PANTRY CHAIR



SPECIFICATION:

MATERIAL: 300MM THK. MDF COUNTERTOP IN HIGH PRESSURE LAMINATE (HPL) FINISH W/ PVC EDGING AND STAINLESS STEEL LEG (HAIRLINE FINISH).

COLOR: LIGHT GRAY

SIZE: 900MM DIAMETER

ROUND TABLE

PERSPECTIVE



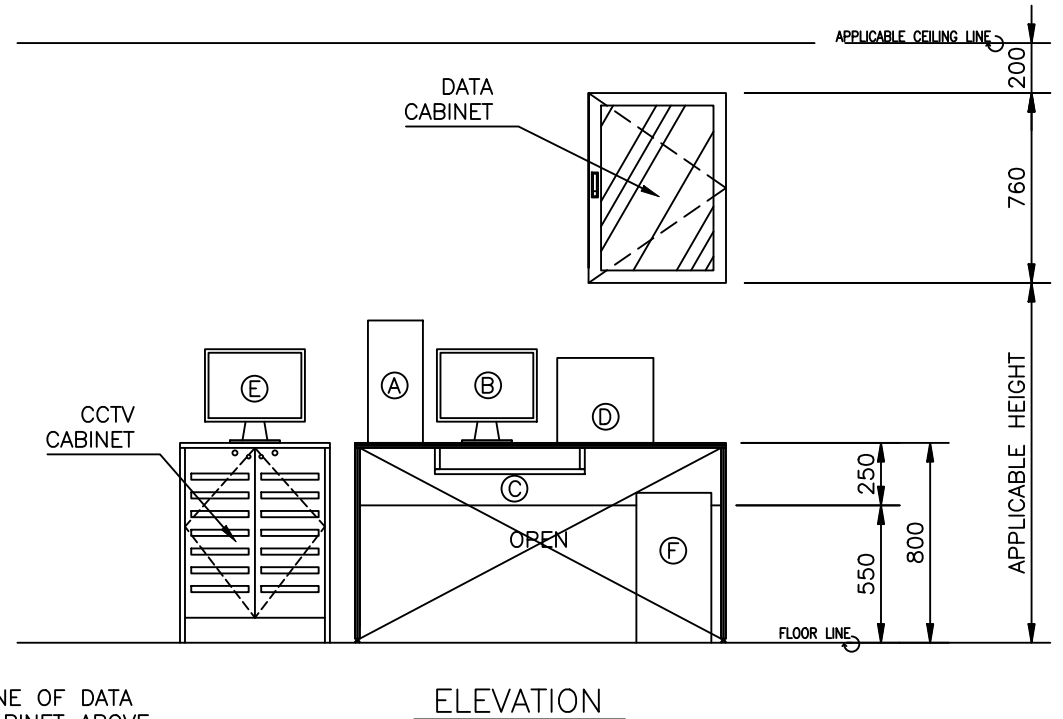
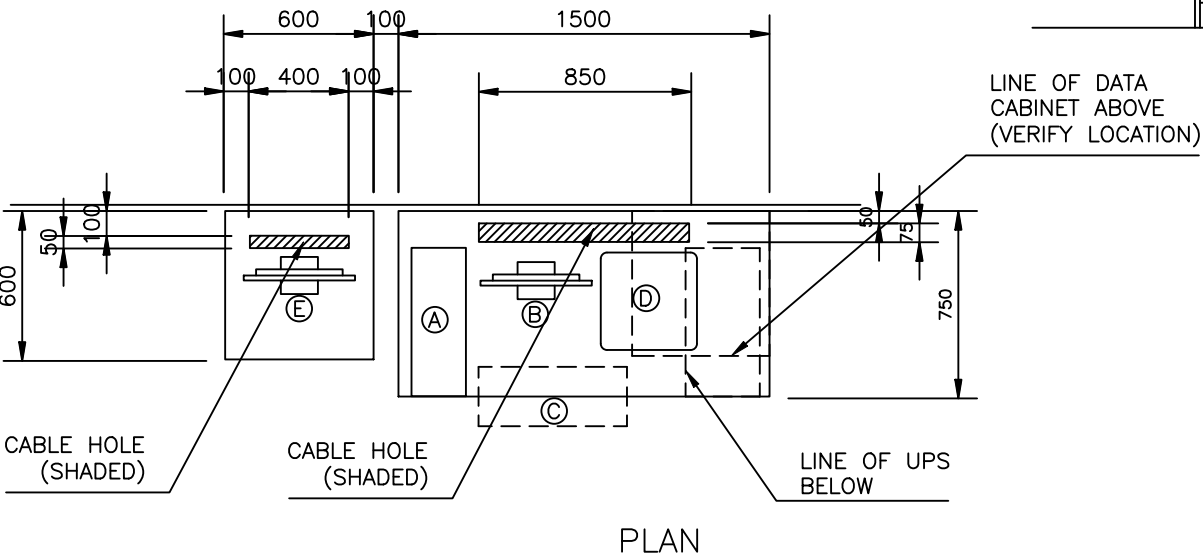
We Build Possibilities.

DBP NAVAL BRANCH

ROUND TABLE

LEGEND:

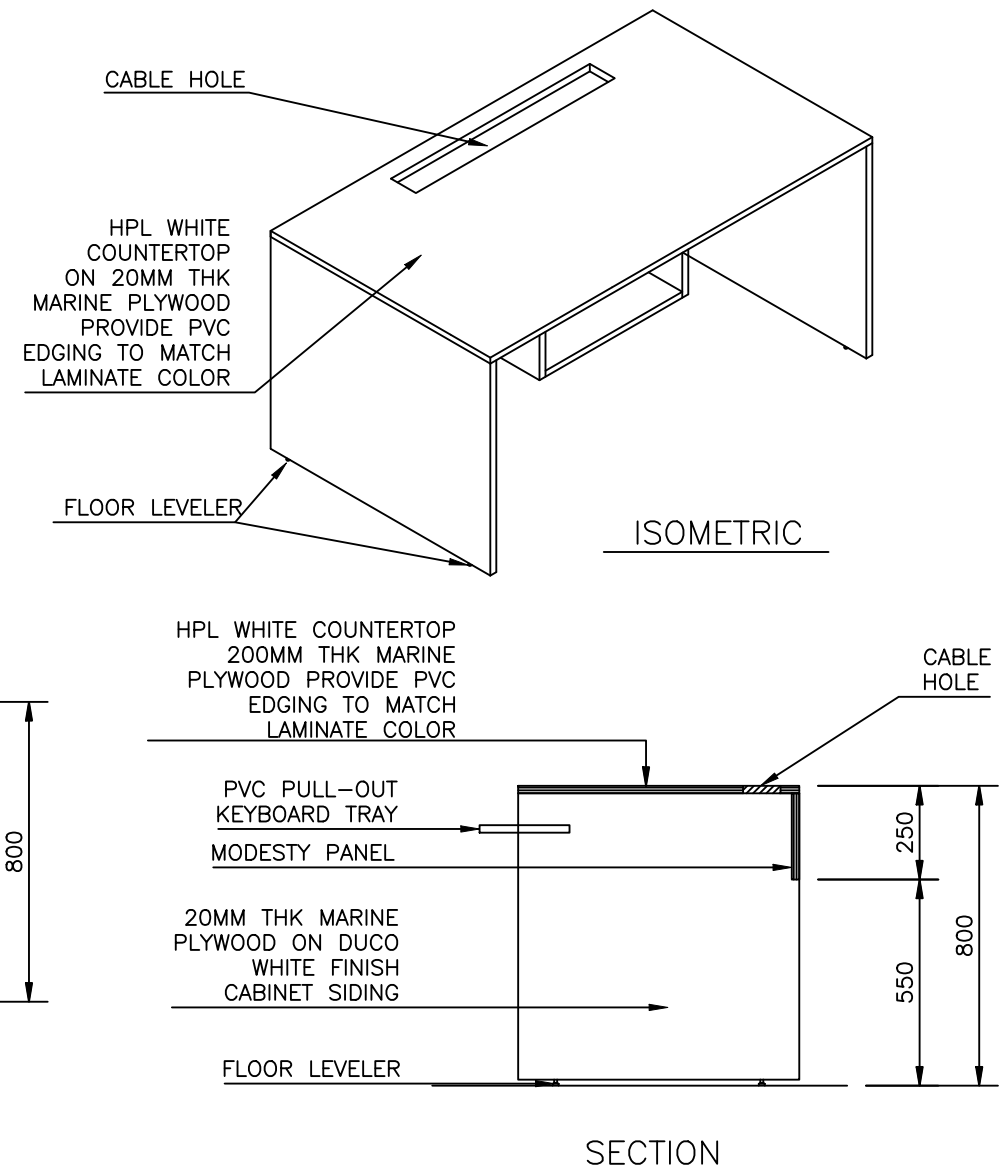
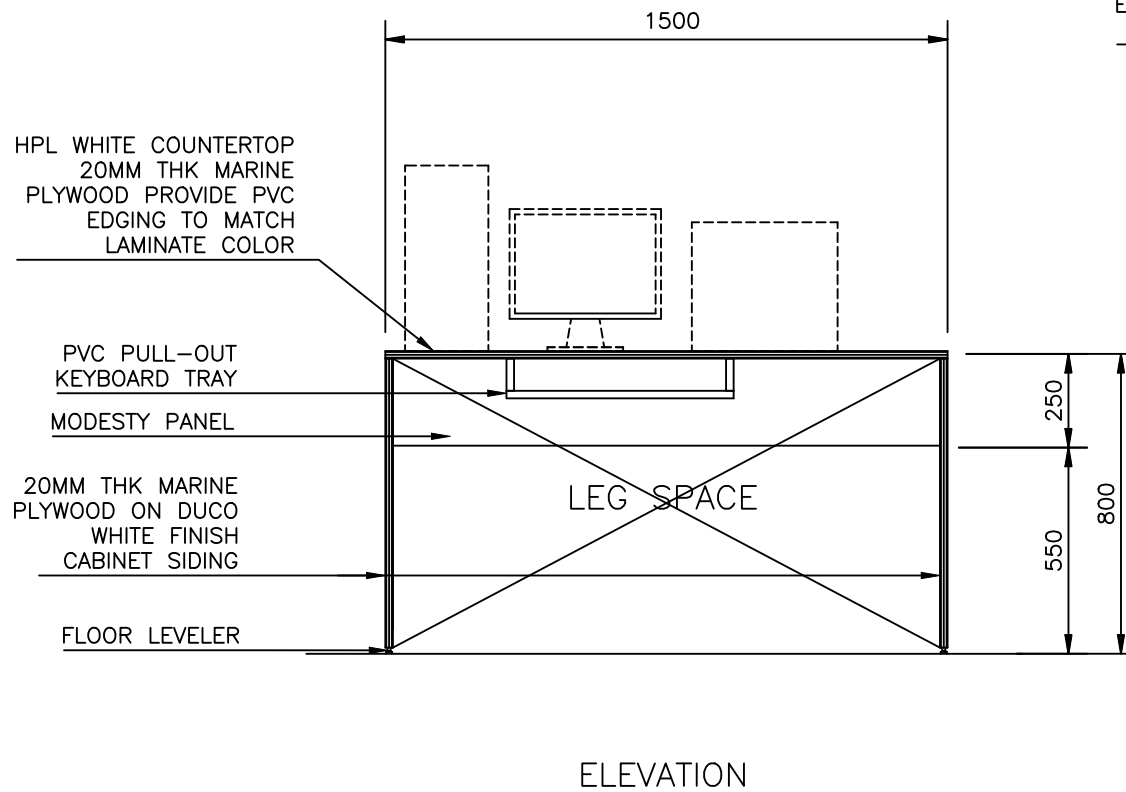
(A)	SERVER CPU	(E)	CCTV MONITOR
(B)	SERVER LCD MONITOR	(F)	UPS
(C)	PVC PULL-OUT KEYBOARD TRAY		
(D)	FAX/PRINTER/SCANNER		



We Build Possibilities.

DBP NAVAL BRANCH

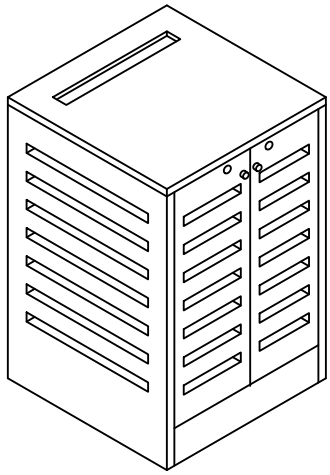
SERVER AREA / CCTV / DATA
DETAILS SET-UP



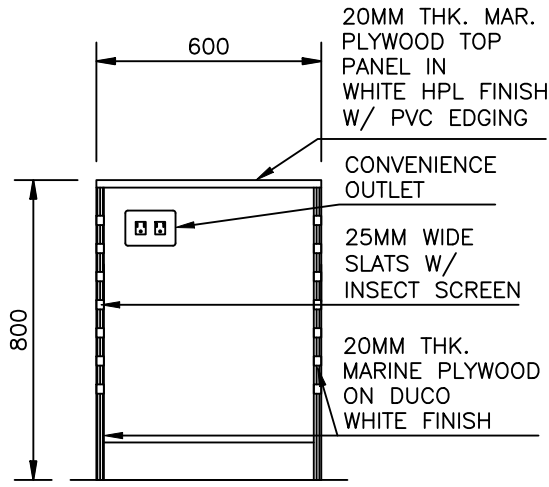
We Build Possibilities.

DBP NAVAL BRANCH

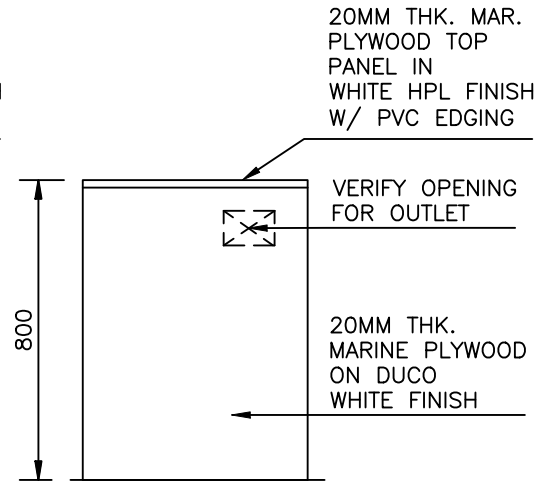
SERVER TABLE DETAILS



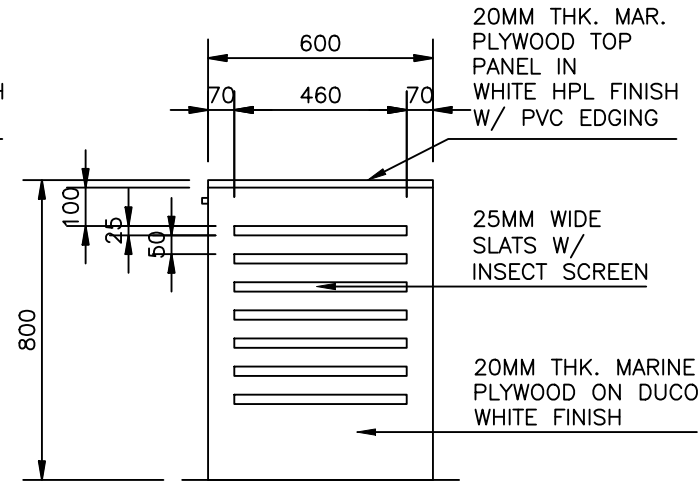
A-7 ISOMETRIC
CCD-1 SCALE 1:20 M.



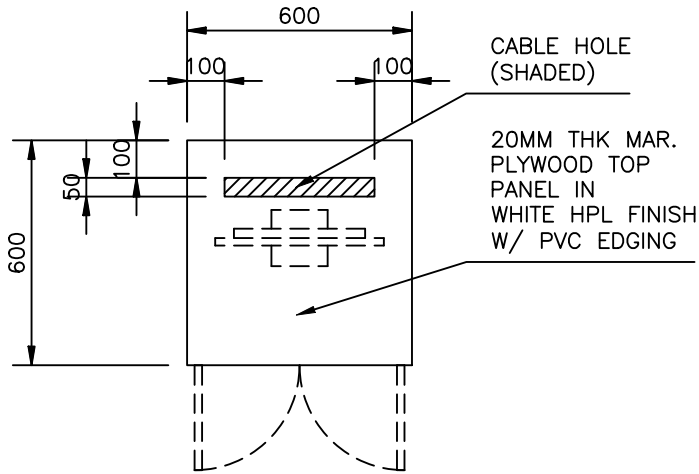
A-6 SECTION
CCD-1 SCALE 1:20 M.



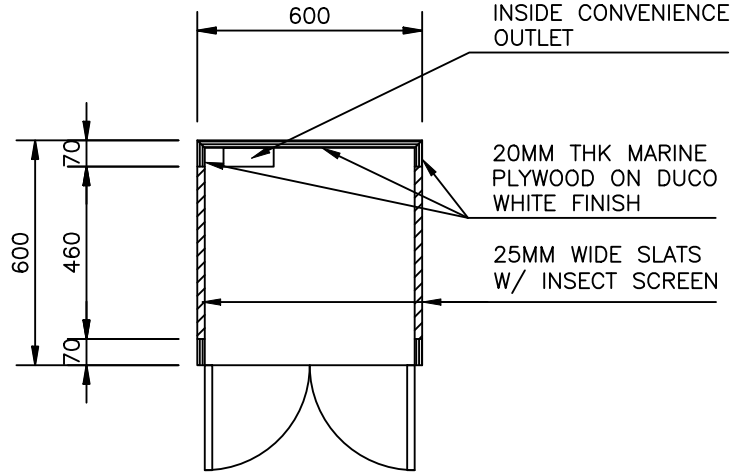
A-5 REAR ELEVATION
CCD-1 SCALE 1:20 M.



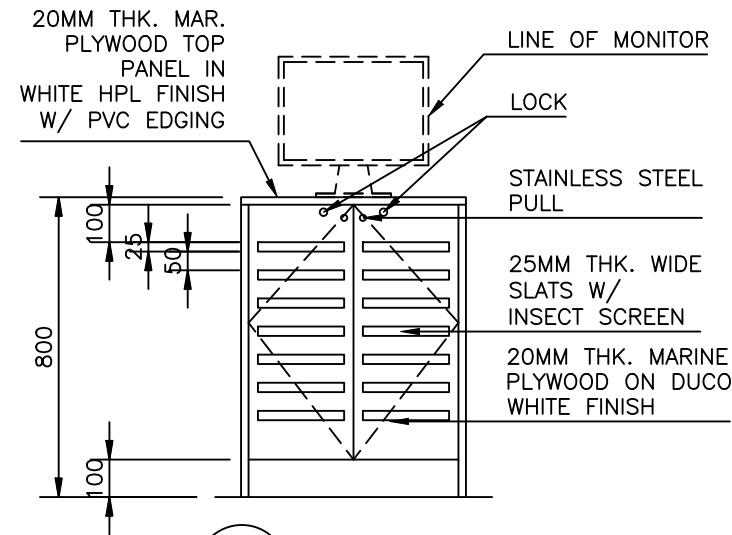
A-4 TYP. SIDE ELEVATION
CCD-1 SCALE 1:20 M.



A-1 PLAN
CCD-1 SCALE 1:20 M.



A-2 INSIDE PLAN
CCD-1 SCALE 1:20 M.



A-3 INSIDE PLAN
CCD-1 SCALE 1:20 M.



We Build Possibilities.

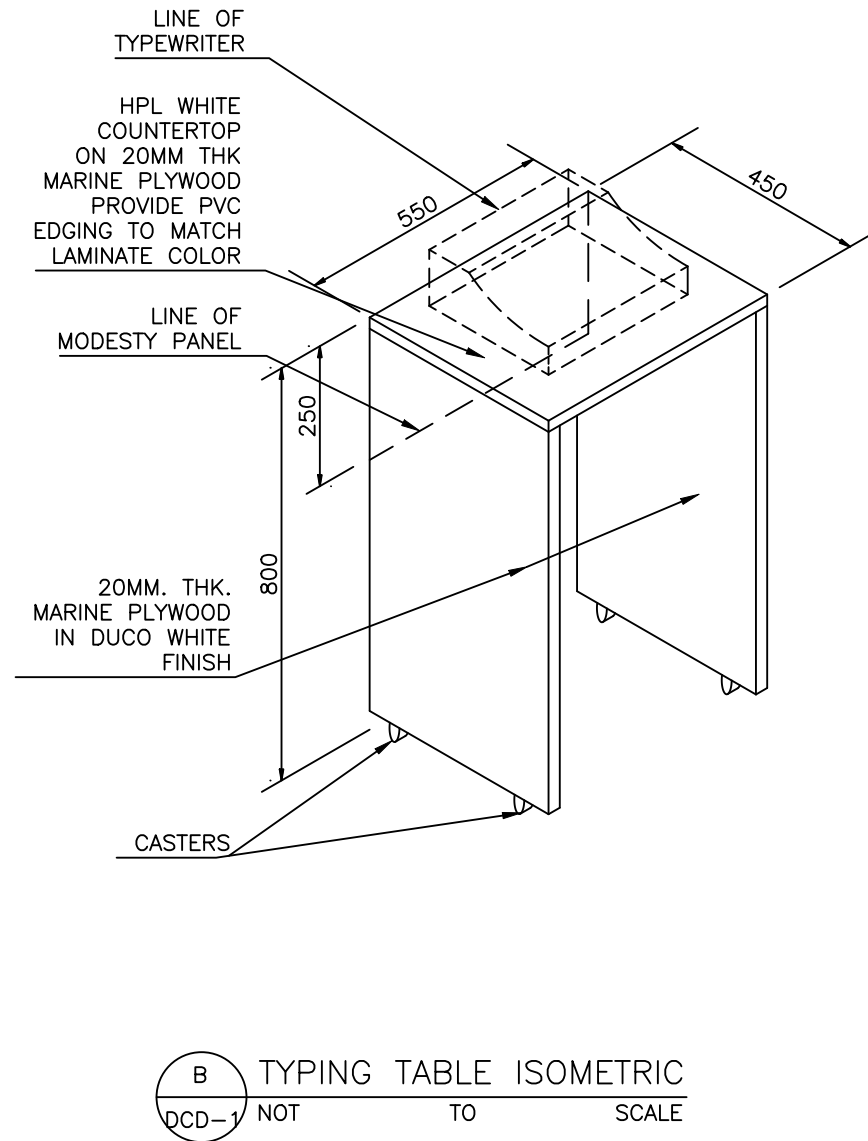
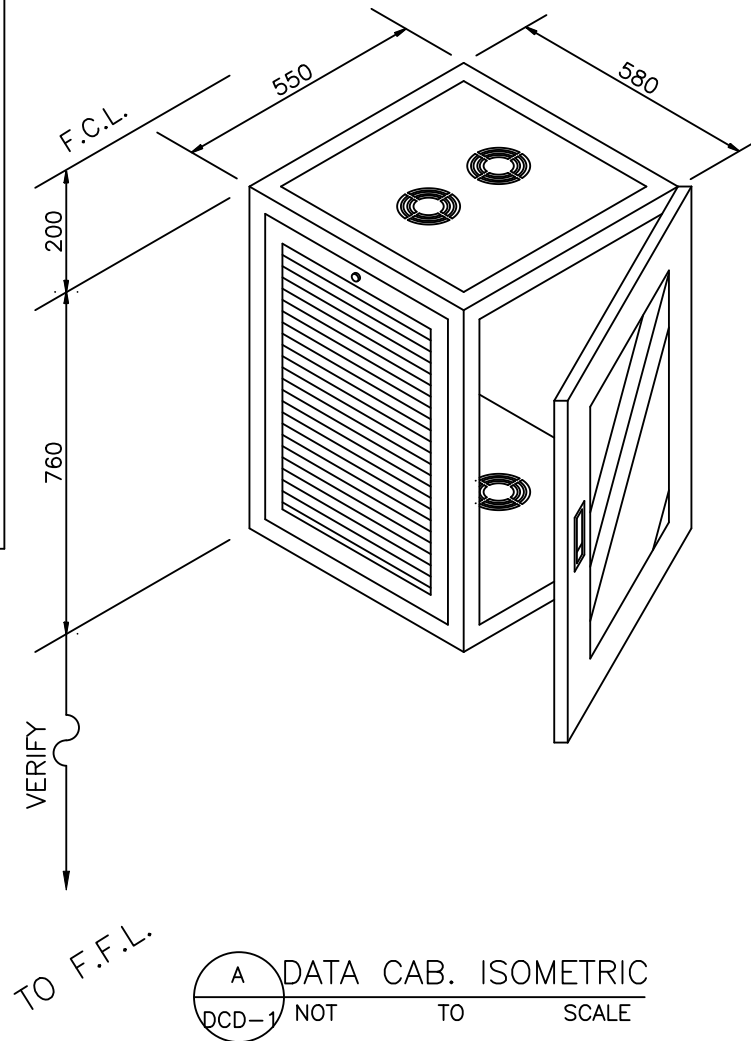
DBP NAVAL BRANCH

CCTV CABINET DETAILS

NOTE: VERIFY SIZE OF VTR UNIT PRIOR TO FABRICATION OF CCTV CABINET.

SPECIFICATION:

- H=760MM
W=550MM
D=580MM
- FRAMING & PANELLING GA#16
 - 19" STANDARD OPENING
 - PLEXIGLASS FRONT DOOR WITH LOCK
 - DETACHABLE EXHAUST SIDE PANEL WITH LOCK
 - FIXED TYPE BACK PANEL
 - WITH VERTICAL CABLE MANAGER AT THE BACK
 - 2 PCS. EXHAUST FAN AT THE TOP PANEL
 - 2 PCS. VENTILLATING FAN AT THE BOTTOM PANEL
 - HORIZONTAL POWERSTRIP 6 CONVINIENCE OUTLET
15AMPERES, 3PRONG, 220V (AT THE BOTTOM PART)
 - WITH 20 PCS. CAGENUT & SCREWS
 - BLACK POWDER COATED
 - RACK SHELVES

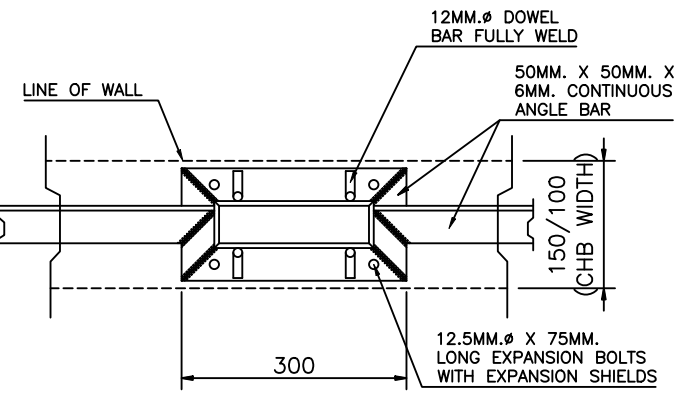


We Build Possibilities.

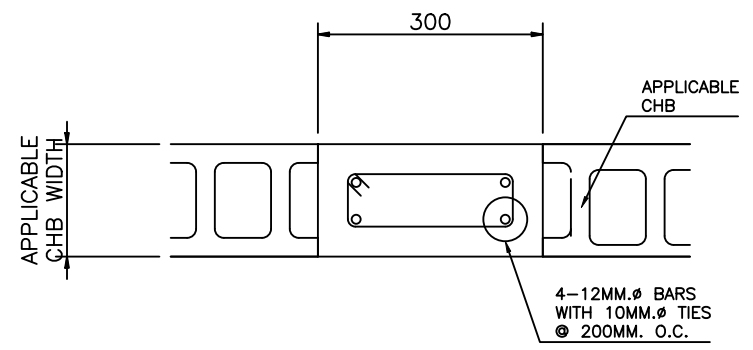
DBP NAVAL BRANCH

DATA CABINET & TYPING TABLE DETAILS

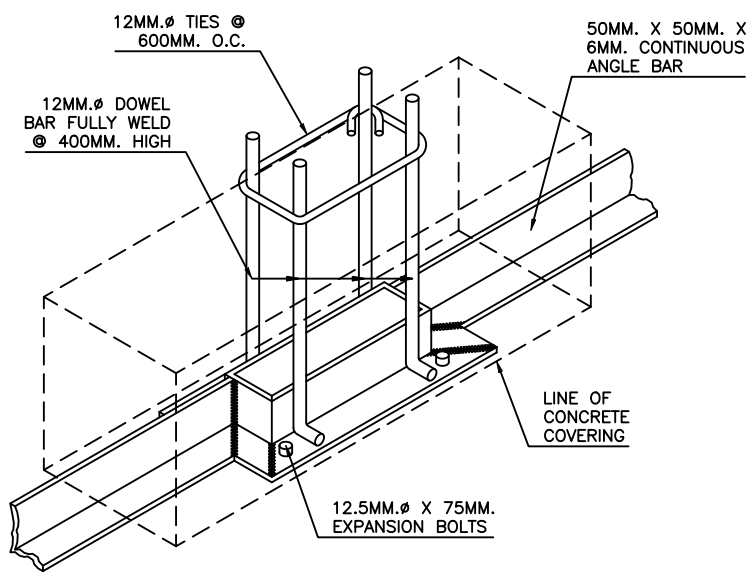
MISCELLANEOUS STRUCTURAL DETAILS



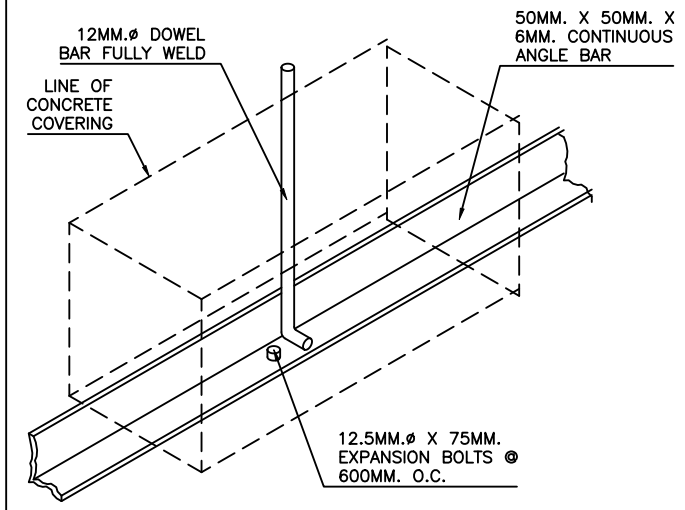
A-1 DETAILED PLAN
SCD-1 SCALE 1:10 M.



A-4 STIFFENER COLUMN DETAIL (SC1)
SCD-1 SCALE 1:10 M.



A-2 ISOMETRIC
SCD-1 SCALE 1:10 M.



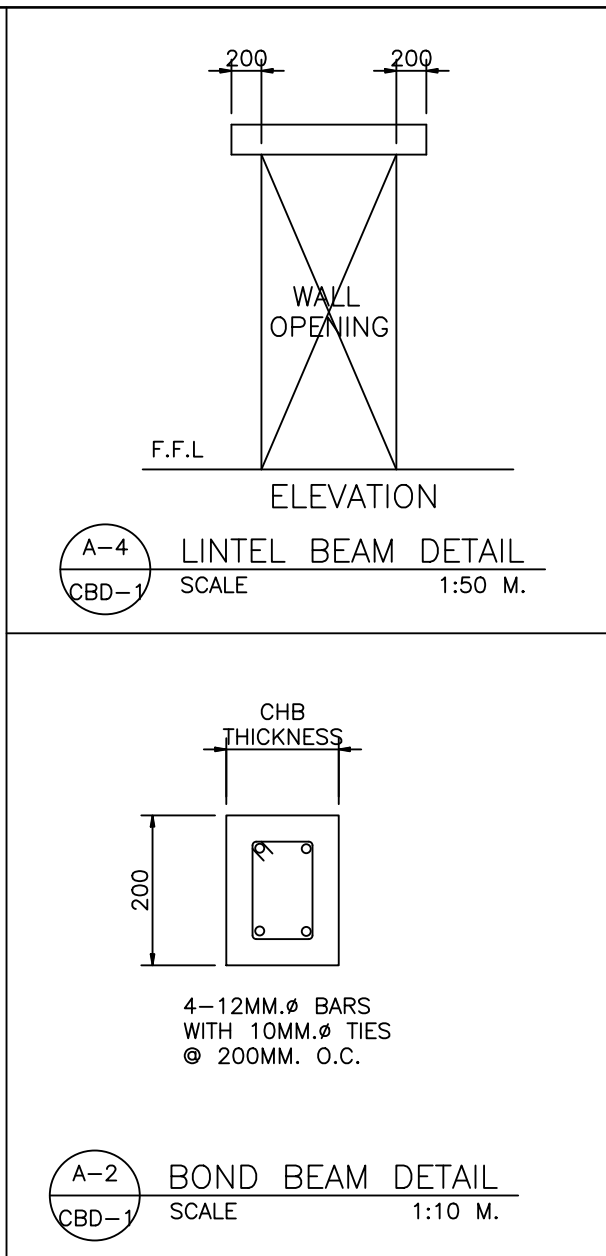
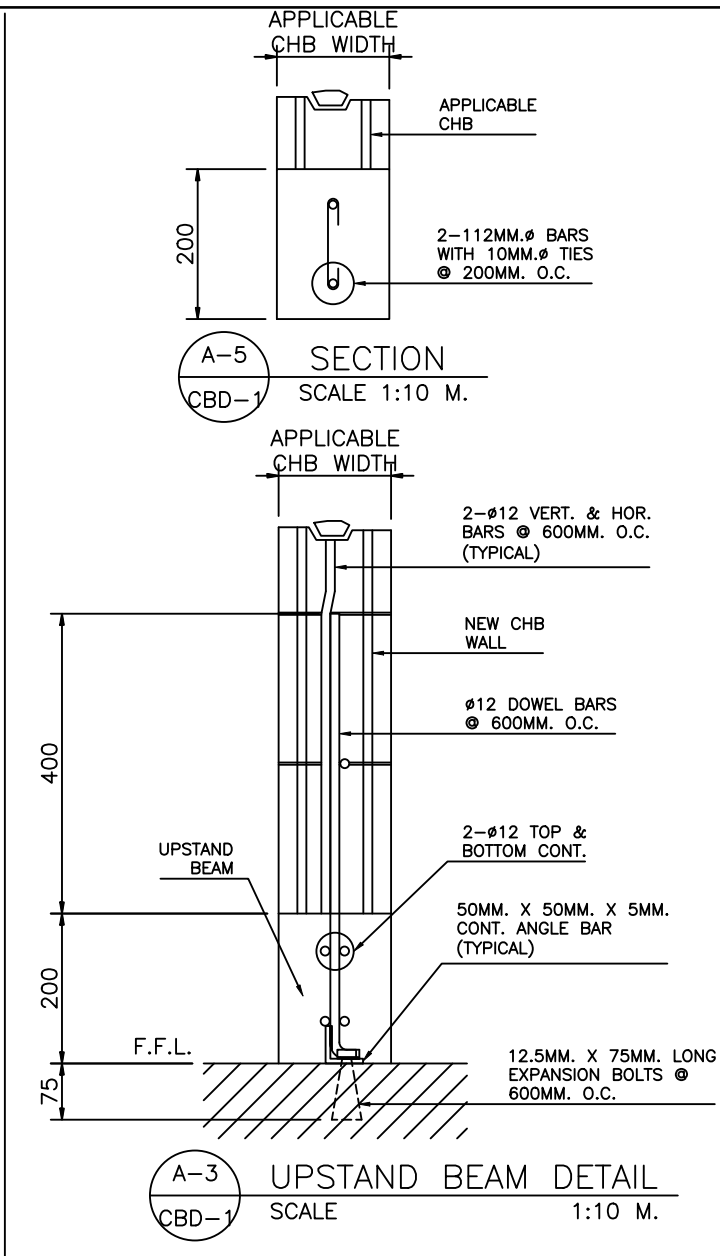
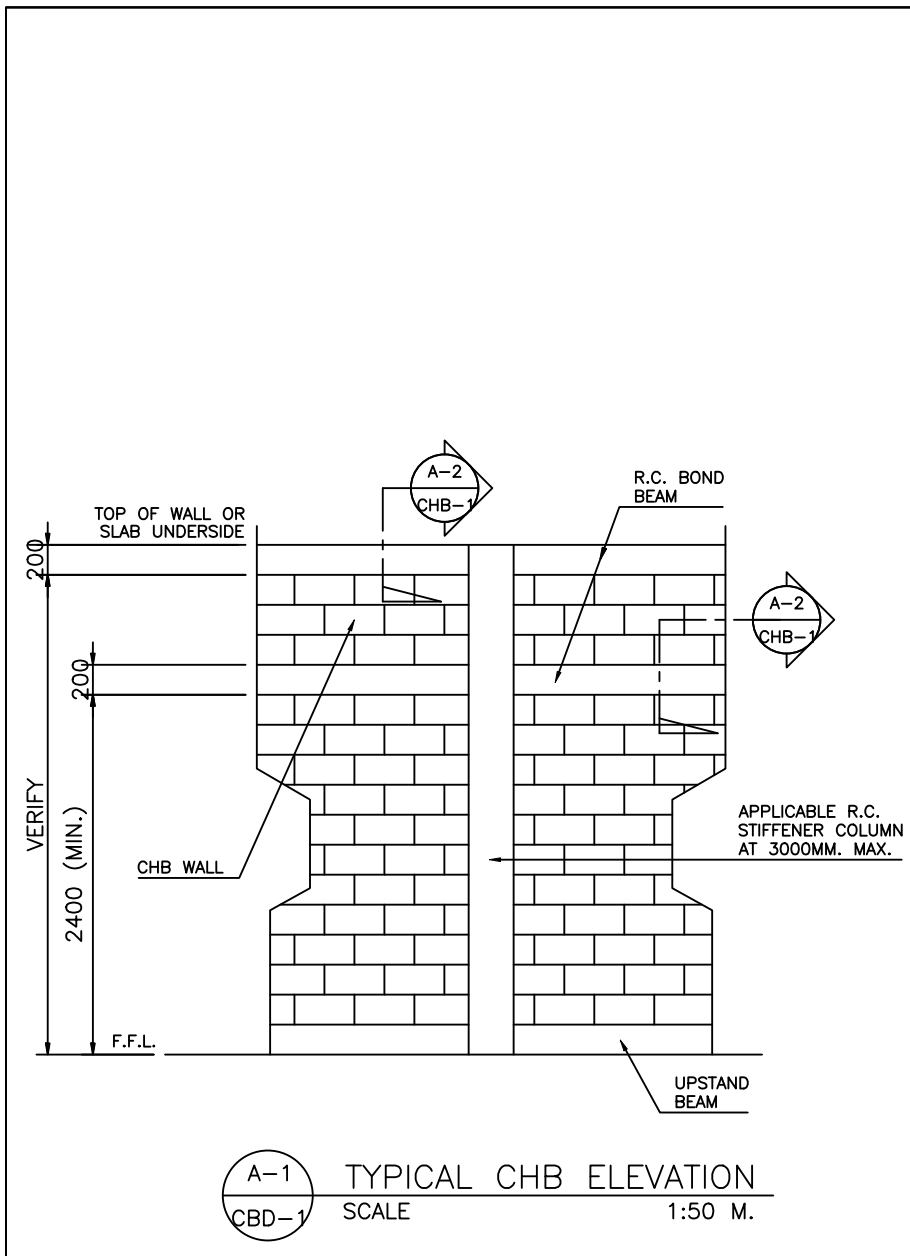
A-3 ISOMETRIC
SCD-1 SCALE 1:10 M.



We Build Possibilities.

DBP NAVAL BRANCH

STIFFENER COLUMN DETAILS



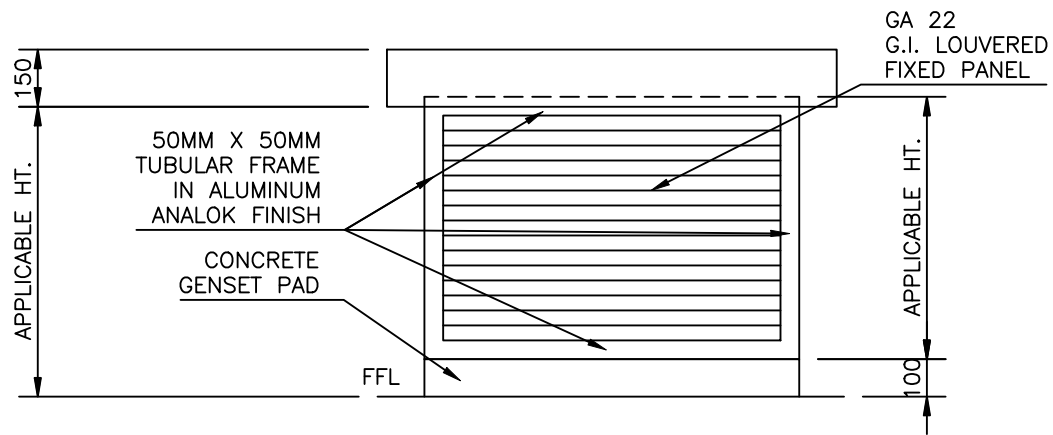
We Build Possibilities.

DBP NAVAL BRANCH

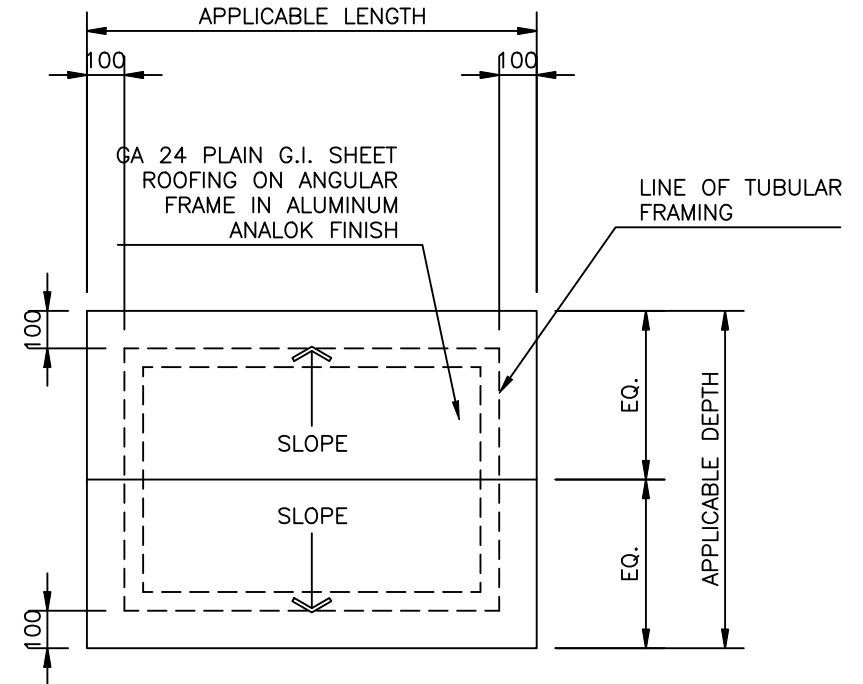
CHB WALL/BEAM DETAILS

GENSET HOUSING DETAILS

IMPORTANT NOTE:
VERIFY SIZE OF GENSET
PRIOR TO FABRICATION.



A REAR ELEVATION
GHD-2 SCALE 1:20 M.



B ROOF PLAN
GHD-2 SCALE 1:20 M.

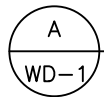
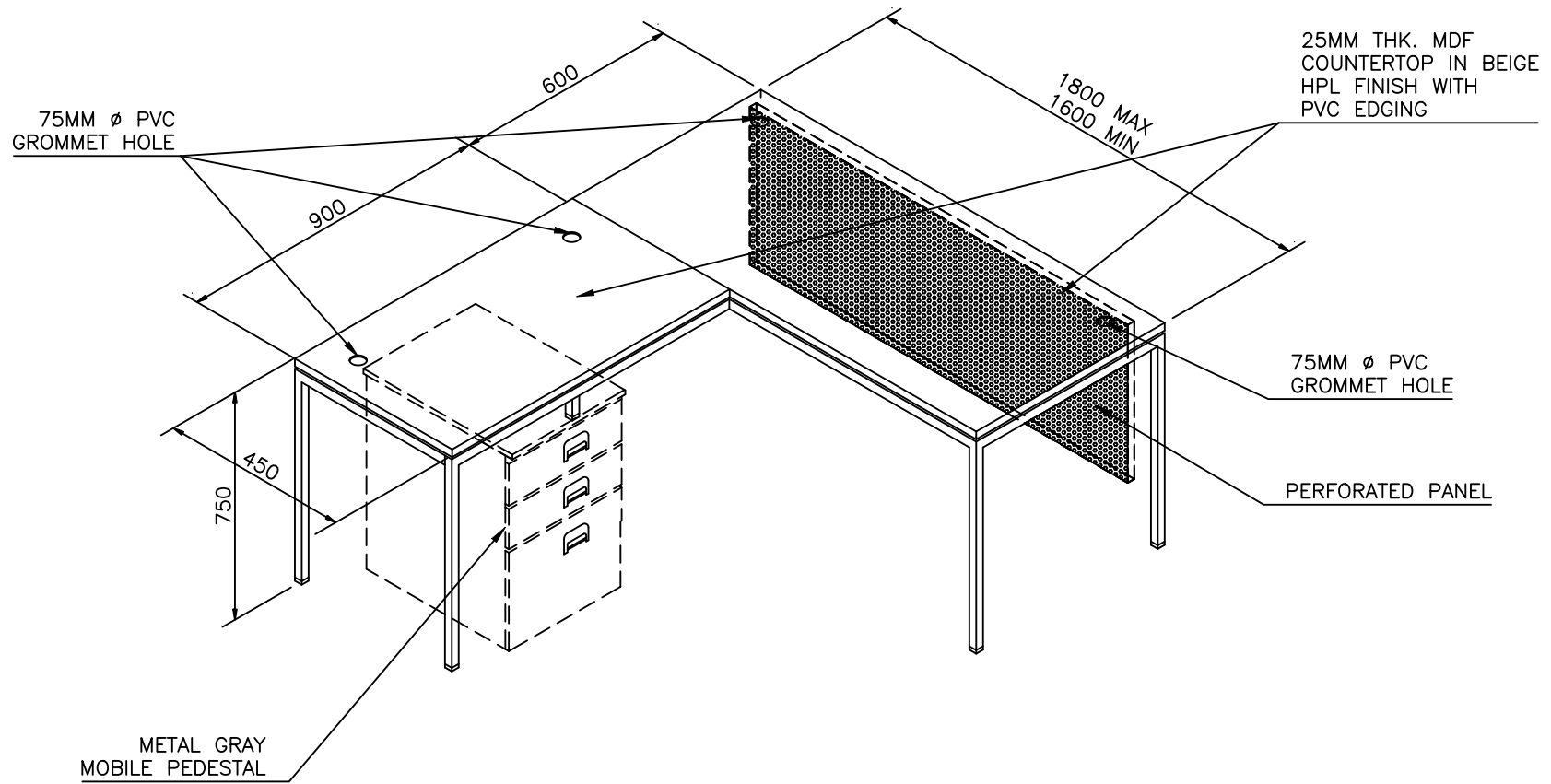


We Build Possibilities.

DBP NAVAL BRANCH

GENSET HOUSING DETAILS (2 SLOPE ROOF)

WORKSTATION DETAILS



ISOMETRIC



We Build Possibilities.

DBP NAVAL BRANCH

BRANCH HEAD WORKSTATION DETAILS



A
 WD-1a

 NOT
 TO
 SCALE

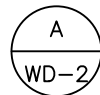
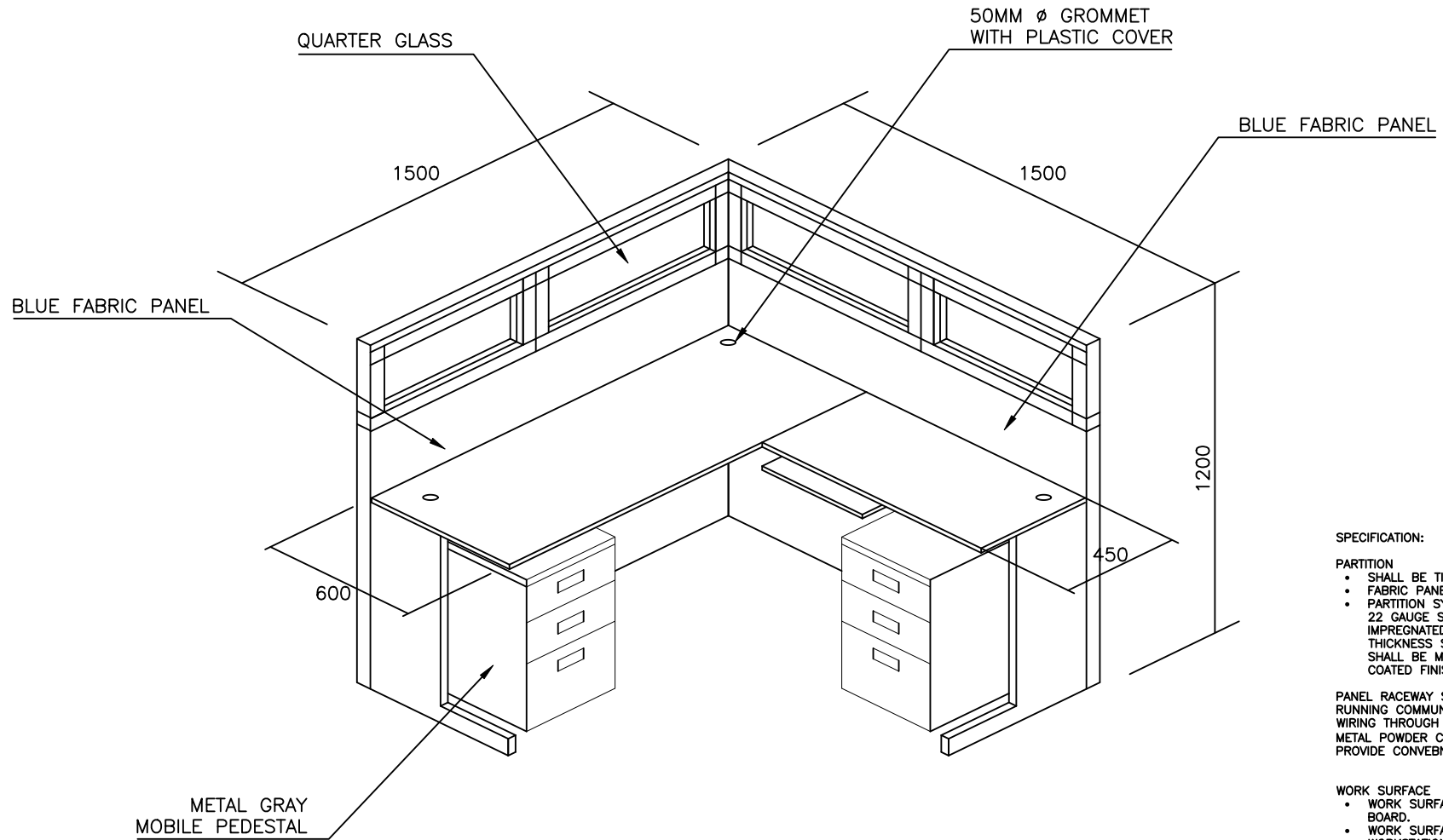
 PERSPECTIVE
 TO
 SCALE



We Build Possibilities.

DBP NAVAL BRANCH

BRANCH HEAD WORKSTATION



ISOMETRIC

SPECIFICATION:

PARTITION

- SHALL BE TILE-LOOKED SYSTEM
- FABRIC PANEL COLOR BLUE
- PARTITION SYSTEM ARE MODULAR INTERLOCKING 22 GAUGE STEEL PANELS SEPARATED BY AN IMPREGNATED HONEYCOMB PAPER CORE; THICKNESS SHALL BE 50-60MM AND TRIMMINGS SHALL BE MADE OF ALUMINUM ALLOY IN POWDER COATED FINISH COLOR GRAY.

PANEL RACEWAY SHALL BE HOLLOW FOR PURPOSE OF RUNNING COMMUNICATION CABLES AND ELECTRICAL WIRING THROUGH THE PANEL. IT SHALL BE MADE OF METAL POWDER COATED (GRAY) IN APPROVED FINISH. PROVIDE CONVENIENCE OUTLET PUNCH HOLE .

WORK SURFACE

- WORK SURFACE SHALL BE OF MELAMINE PARTICLE BOARD.
- WORK SURFACES FOR THE COUNTER TOP WORKSTATION SHALL BE 25MM THK. EDGES SHALL BE PROVIDED WITH PVC EDGE BAND
- PROVIDE GROMMETS ON EVERY WORKSTATIONS FOR EASY CABLING.

OVERALL DIMENSION:

MAIN WORKTOP : 1500 X 600
SIDE RETURN : 900 X 450



We Build Possibilities.

DBP NAVAL BRANCH

STAFF WORKSTATION DETAILS



A
PERSPECTIVE
WD-2a
NOT
TO
SCALE

SPECIFICATION:

PARTITION

- SHALL BE TILE-LOOKED SYSTEM
- FABRIC PANEL COLOR BLUE
- PARTITION SYSTEM ARE MODULAR INTERLOCKING 22 GAUGE STEEL PANELS SEPARATED BY AN IMPREGNATED HONEYCOMB PAPER CORE; THICKNESS SHALL BE 50-60MM AND TRIMMINGS SHALL BE MADE OF ALUMINUM ALLOY IN POWDER COATED FINISH COLOR GRAY.

PANEL RACEWAY SHALL BE HOLLOW FOR PURPOSE OF RUNNING COMMUNICATION CABLES AND ELECTRICAL WIRING THROUGH THE PANEL. IT SHALL BE MADE OF METAL POWDER COATED (GRAY) IN APPROVED FINISH. PROVIDE CONVENIENCE OUTLET PUNCH HOLE .

WORK SURFACE

- WORK SURFACE SHALL BE OF MELAMINE PARTICLE BOARD.
- WORK SURFACES FOR THE COUNTER TOP WORKSTATION SHALL BE 25MM THK. EDGES SHALL BE PROVIDED WITH PVC EDGE BAND
- PROVIDE GROMMETS ON EVERY WORKSTATIONS FOR EASY CABLING.

OVERALL DIMENSION:

MAIN WORKTOP : 1500 X 600
 SIDE RETURN : 900 X 450



We Build Possibilities.

DBP NAVAL BRANCH

STAFF WORKSTATION